

PRCC Rabbit pAb

CatalogNo: YN3960

| Key Features

Host Species

- Rabbit

Reactivity

- Human

Applications

- WB

MW

- 54kD (Calculated)

Isotype

- IgG

| Recommended Dilution Ratios

WB 1:500-2000

| Storage

Storage*

-15°C to -25°C/1 year(Do not lower than -25°C)

Formulation

Liquid in PBS containing 50% glycerol, 0.5% BSA and 0.02% sodium azide.

| Basic Information

Clonality

Polyclonal

| Immunogen Information

Immunogen

Synthesized peptide derived from human PRCC AA range: 74-124

Specificity

This antibody detects endogenous levels of PRCC at Human

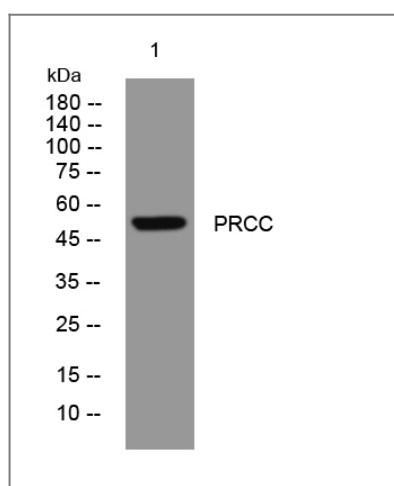
| Target Information

Gene name

PRCC TPRC

Protein Name	PRCC		
	Organism	Gene ID	UniProt ID
	Human	5546;	Q92733;
Cellular Localization	Nucleus .		
Tissue specificity	Ubiquitous in fetal and adult tissues.		
Function	Caution:The sequence shown here is derived from an Ensembl automatic analysis pipeline and should be considered as preliminary data.,Disease:A chromosomal aberration involving PRCC may be a cause of papillary renal cell carcinoma (PRCC) [MIM:605074]. Translocation t(X;1)(p11.2;q21.2) with TFE3.,tissue specificity:Ubiquitous in fetal and adult tissues.,		

Validation Data



Western blot analysis of lysates from MCF-7 cells, primary antibody was diluted at 1:1000, 4° over night

Contact information

Orders: order@immunoway.com
 Support: tech@immunoway.com
 Telephone: 877-594-3616 (Toll Free), 408-747-0185
 Website: <http://www.immunoway.com>
 Address: 2200 Ringwood Ave San Jose, CA 95131 USA



Please scan the QR code to access additional product information:
PRCC Rabbit pAb