

RBV1C Rabbit pAb

CatalogNo: YN3939

Key Features

Host Species

- Rabbit

Reactivity

- Human

Applications

- WB

MW

- 55kD (Calculated)

Isotype

- IgG

Recommended Dilution Ratios

WB 1:500-2000

Storage

Storage*

-15°C to -25°C/1 year(Do not lower than -25°C)

Formulation

Liquid in PBS containing 50% glycerol, 0.5% BSA and 0.02% sodium azide.

Basic Information

Clonality

Polyclonal

Immunogen Information

Immunogen

Synthesized peptide derived from human RBV1C AA range: 321-371

Specificity

This antibody detects endogenous levels of RBV1C at Human

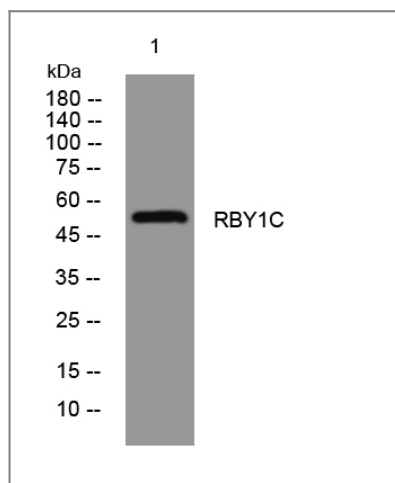
Target Information

Gene name

RBMY1C

Protein Name	RBY1C		
	Organism	Gene ID	UniProt ID
	Human		P0DJD4 ;
Cellular Localization	Nucleus .		
Tissue specificity	Testis-specific.		
Function	<p>developmental stage:Expressed in all of the transcriptionally active stages of germ cell development from spermatogonia through spermatocytes to round spermatids.,Function:RNA-binding protein which may be involved in spermatogenesis. Required for sperm development, possibly by participating in pre-mRNA splicing in the testis.,miscellaneous:The RBMY1 proteins are encoded by strongly repeated regions of the Y chromosome, mostly within the AZFb region. The exact number of functional copies is unclear and may vary between individuals, and some of them may represent pseudogenes. The proteins are very similar, which gives their individual characterization difficult. Thus, most experiments do not discriminate between the different members. One can therefore suppose that reported interactions with a RBMY1 protein involve all the proteins.,similarity:Contains 1 RRM (RNA recognition motif) domain.,subunit:Interacts with splicing factor proteins SFRS3/SRP20, TRA2B/SFRS10, KHDRBS1/SAM68 and KHDRBS3.,tissue specificity:Testis-specific.,</p>		

Validation Data



Western blot analysis of lysates from VEC cells, primary antibody was diluted at 1:1000, 4° over night

Contact information

Orders: order@immunoway.com
 Support: tech@immunoway.com
 Telephone: 877-594-3616 (Toll Free), 408-747-0185
 Website: <http://www.immunoway.com>
 Address: 2200 Ringwood Ave San Jose, CA 95131 USA



Please scan the QR code
 to access additional
 product information:
RBY1C Rabbit pAb

