

XYLK Rabbit pAb

CatalogNo: YN3932

| Key Features

Host Species

- Rabbit

Reactivity

- Human, Mouse

Applications

- WB

MW

- 45kD (Calculated)

Isotype

- IgG

| Recommended Dilution Ratios

WB 1:500-2000

| Storage

Storage*

-15°C to -25°C/1 year (Do not lower than -25°C)

Formulation

Liquid in PBS containing 50% glycerol, 0.5% BSA and 0.02% sodium azide.

| Basic Information

Clonality

Polyclonal

| Immunogen Information

Immunogen

Synthesized peptide derived from human XYLK AA range: 121-171

Specificity

This antibody detects endogenous levels of XYLK at Human/Mouse

| Target Information

Gene name

FAM20B KIAA0475

Protein Name XYLK

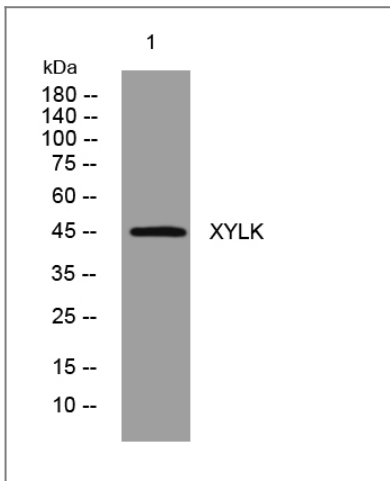
Organism	Gene ID	UniProt ID
Human	9917 ;	O75063 ;
Mouse	215015 ;	Q8VCS3 ;

Cellular Localization Golgi apparatus membrane ; Single-pass type II membrane protein .

Tissue specificity Widely expressed. Strongly expressed in pancreas, spleen and fetal liver.

Function similarity:Belongs to the FAM20 family.,tissue specificity:Widely expressed.,

Validation Data



Western blot analysis of lysates from Hela cells, primary antibody was diluted at 1:1000, 4° over night

Contact information

Orders: order@immunoway.com
Support: tech@immunoway.com
Telephone: 877-594-3616 (Toll Free), 408-747-0185
Website: <http://www.immunoway.com>
Address: 2200 Ringwood Ave San Jose, CA 95131 USA



Please scan the QR code to access additional product information:
XYLK Rabbit pAb