

LAT1L Rabbit pAb

CatalogNo: YN3922

| Key Features

Host Species

- Rabbit

Reactivity

- Human

Applications

- WB

MW

- 21kD (Calculated)

Isotype

- IgG

| Recommended Dilution Ratios

WB 1:500-2000

| Storage

Storage*

-15°C to -25°C/1 year(Do not lower than -25°C)

Formulation

Liquid in PBS containing 50% glycerol, 0.5% BSA and 0.02% sodium azide.

| Basic Information

Clonality

Polyclonal

| Immunogen Information

Immunogen

Synthesized peptide derived from human LAT1L AA range: 118-168

Specificity

This antibody detects endogenous levels of LAT1L at Human

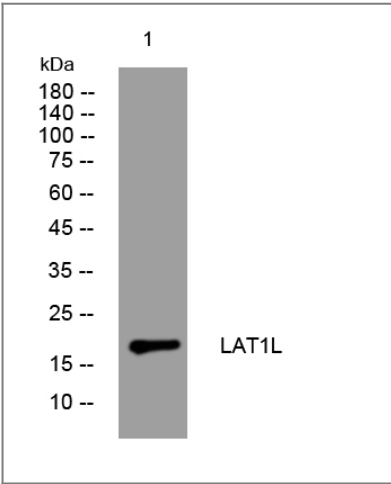
| Target Information

Gene name

SLC7A5P2 IMAA MMAA

Protein Name	LAT1L		
	Organism	Gene ID	UniProt ID
	Human		Q9GIP4 ;
Cellular Localization	Membrane ; Multi-pass membrane protein .		
Tissue specificity	Expressed in peripheral blood mononuclear cells and lymphoid and myeloid cell lines.		
Function	Caution:Could be the product of a pseudogene.,induction:Up-regulated by concanavilin-A stimulation.,similarity:Belongs to the amino acid-polyamine-organocation (APC) superfamily. L-type amino acid transporter (LAT) (TC 2.A.3.8) family.,tissue specificity:Expressed in peripheral blood mononuclear cells and lymphoid and myeloid cell lines.,		

| Validation Data



Western blot analysis of lysates from VEC cells, primary antibody was diluted at 1:1000, 4°over night

| Contact information

Orders: order@immunoway.com
 Support: tech@immunoway.com
 Telephone: 877-594-3616 (Toll Free), 408-747-0185
 Website: <http://www.immunoway.com>
 Address: 2200 Ringwood Ave San Jose, CA 95131 USA



Please scan the QR code
 to access additional
 product information:
LAT1L Rabbit pAb