

## HHLA2 Rabbit pAb

CatalogNo: YN3915

### Key Features

#### Host Species

- Rabbit

#### Reactivity

- Human

#### Applications

- WB

#### MW

- 46kD (Calculated)

#### Isotype

- IgG

### Recommended Dilution Ratios

WB 1:500-2000

### Storage

**Storage\*** -15°C to -25°C/1 year(Do not lower than -25°C)

**Formulation** Liquid in PBS containing 50% glycerol, 0.5% BSA and 0.02% sodium azide.

### Basic Information

**Clonality** Polyclonal

### Immunogen Information

**Immunogen** Synthesized peptide derived from human HHLA2 AA range: 165-215

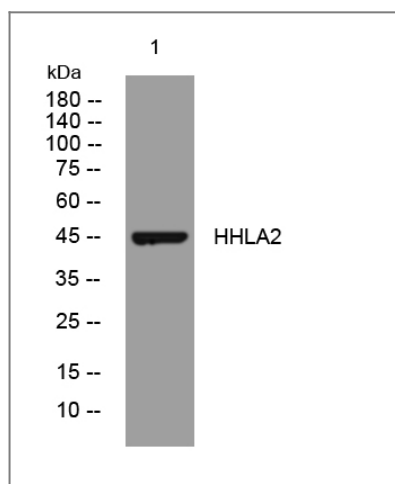
**Specificity** This antibody detects endogenous levels of HHLA2 at Human

### Target Information

**Gene name** HHLA2

<b>Protein Name</b>	HLA2		
	<b>Organism</b>	<b>Gene ID</b>	<b>UniProt ID</b>
	Human	<a href="#">11148;</a>	<a href="#">Q9UM44;</a>
<b>Cellular Localization</b>	Membrane ; Single-pass type I membrane protein .		
<b>Tissue specificity</b>	Expressed at high levels in colon, kidney, testis, lung and pancreas, and at lower levels in small intestine, liver and skeletal muscle. In immune cells, highly expressed in B-cells, dendritic cells and macrophages. Not detected in T-cells.		
<b>Function</b>	sequence Caution:Translated as Trp.,similarity:Contains 1 Ig-like C1-type (immunoglobulin-like) domain.,similarity:Contains 2 Ig-like V-type (immunoglobulin-like) domains.,tissue specificity:Expressed in colon, small intestine, lung and kidney.,		

## Validation Data



Western blot analysis of lysates from 293T cells, primary antibody was diluted at 1:1000, 4°over night

## Contact information

Orders: [order@immunoway.com](mailto:order@immunoway.com)  
 Support: [tech@immunoway.com](mailto:tech@immunoway.com)  
 Telephone: 877-594-3616 (Toll Free), 408-747-0185  
 Website: <http://www.immunoway.com>  
 Address: 2200 Ringwood Ave San Jose, CA 95131 USA



Please scan the QR code to access additional product information:  
**HHLA2 Rabbit pAb**