

## HRSL1 Rabbit pAb

CatalogNo: YN3890

Orthogonal Validated 

### Key Features

#### Host Species

- Rabbit

#### Reactivity

- Human, Mouse

#### Applications

- WB

#### MW

- 18kD (Calculated)

#### Isotype

- IgG

### Storage

**Storage\*** -15°C to -25°C/1 year (Do not lower than -25°C)

**Formulation** Liquid in PBS containing 50% glycerol, 0.5% BSA and 0.02% sodium azide.

### Recommended Dilution Ratios

WB 1:500-2000

### Basic Information

**Clonality** Polyclonal

### Immunogen Information

**Immunogen** Synthesized peptide derived from human HRSL1 AA range: 50-100

**Specificity** This antibody detects endogenous levels of HRSL1 at Human/Mouse

### Target Information

**Gene name** HRASLS

**Protein Name** HRSL1

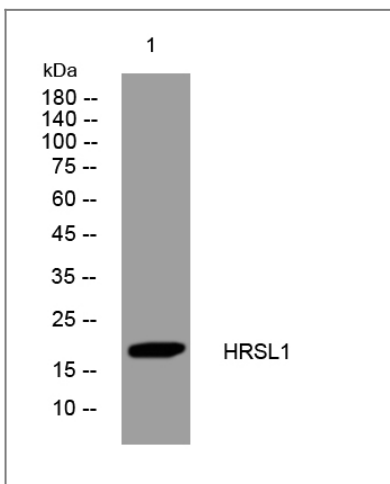
| Organism | Gene ID                 | UniProt ID               |
|----------|-------------------------|--------------------------|
| Human    | <a href="#">57110</a> ; | <a href="#">Q9HDD0</a> ; |
| Mouse    | <a href="#">27281</a> ; | <a href="#">Q9QZU4</a> ; |

**Cellular Localization** [Isoform 1]: Membrane ; Single-pass membrane protein . Cytoplasm .; [Isoform 2]: Nucleus . Cytoplasm .

**Tissue specificity** [Isoform 1]: Abundantly expressed in testis, skeletal muscle, brain, and heart. ; [Isoform 2]: Highly expressed in the testis, skeletal muscle, brain, heart, and thyroid.

**Function** similarity:Belongs to the H-rev107 family.,

## Validation Data



Western blot analysis of lysates from 293T cells, primary antibody was diluted at 1:1000, 4°over night

## Contact information

Orders: [order@immunoway.com](mailto:order@immunoway.com)  
Support: [tech@immunoway.com](mailto:tech@immunoway.com)  
Telephone: 877-594-3616 (Toll Free), 408-747-0185  
Website: <http://www.immunoway.com>  
Address: 2200 Ringwood Ave San Jose, CA 95131 USA



Please scan the QR code to access additional product information:  
**HRSL1 Rabbit pAb**