

## DHX32 Rabbit pAb

CatalogNo: YN3886

### | Key Features

#### Host Species

- Rabbit

#### Reactivity

- Human, Mouse

#### Applications

- WB

#### MW

- 82kD (Calculated)

#### Isotype

- IgG

### | Recommended Dilution Ratios

**WB 1:500-2000**

### | Storage

#### Storage\*

-15°C to -25°C/1 year(Do not lower than -25°C)

#### Formulation

Liquid in PBS containing 50% glycerol, 0.5% BSA and 0.02% sodium azide.

### | Basic Information

#### Clonality

Polyclonal

### | Immunogen Information

#### Immunogen

Synthesized peptide derived from human DHX32 AA range: 218-268

#### Specificity

This antibody detects endogenous levels of DHX32 at Human/Mouse

### | Target Information

#### Gene name

DHX32 DDX32

**Protein Name** DHX32

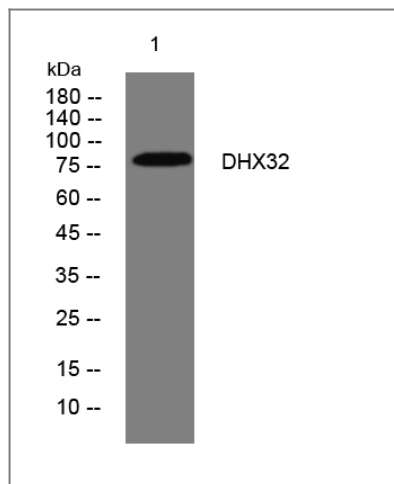
Organism	Gene ID	UniProt ID
Human	<a href="#">55760;</a>	<a href="#">Q7L7V1;</a>
Mouse	<a href="#">101437;</a>	<a href="#">Q8BZS9;</a>

**Cellular Localization** Nucleus . Mitochondrion .

**Tissue specificity** Expressed in lymphoid tissues (at protein level). Expressed in brain, heart, skeletal muscle, colon, thymus, spleen, kidney, liver, small intestine, placenta, lung, lymphoid tissues and blood leukocytes.

**Function** induction:Up-regulated by ionomycin in T lymphocytes. Down-regulated in acute lymphoblastic leukemia.,similarity:Belongs to the DEAD box helicase family. DEAH subfamily.,similarity:Contains 1 helicase ATP-binding domain.,similarity:Contains 1 helicase C-terminal domain.,tissue specificity:Expressed in lymphoid tissues (at protein level). Expressed in brain, heart, skeletal muscle, colon, thymus, spleen, kidney, liver, small intestine, placenta, lung, lymphoid tissues and blood leukocytes.,

## Validation Data



Western blot analysis of lysates from 293T cells, primary antibody was diluted at 1:1000, 4° over night

## Contact information

Orders: [order@immunoway.com](mailto:order@immunoway.com)  
Support: [tech@immunoway.com](mailto:tech@immunoway.com)  
Telephone: 877-594-3616 (Toll Free), 408-747-0185  
Website: <http://www.immunoway.com>  
Address: 2200 Ringwood Ave San Jose, CA 95131 USA



Please scan the QR code to access additional product information:  
**DHX32 Rabbit pAb**

