

## DPM3 Rabbit pAb

CatalogNo: YN3861

### Key Features

#### Host Species

- Rabbit

#### Reactivity

- Human, Mouse

#### Applications

- IHC, IF

#### MW

- 10kD (Calculated)

#### Isotype

- IgG

### Recommended Dilution Ratios

IHC 1:50-200

IF 1:50-200

### Storage

**Storage\*** -15°C to -25°C/1 year (Do not lower than -25°C)

**Formulation** Liquid in PBS containing 50% glycerol, 0.5% BSA and 0.02% sodium azide.

### Basic Information

**Clonality** Polyclonal

### Immunogen Information

**Immunogen** Synthesized peptide derived from human DPM3 AA range: 14-64

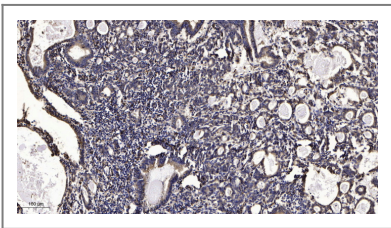
**Specificity** This antibody detects endogenous levels of DPM3 at Human/Mouse

### Target Information

**Gene name** DPM3

<b>Protein Name</b>	DPM3		
	<b>Organism</b>	<b>Gene ID</b>	<b>UniProt ID</b>
	Human	<a href="#">54344;</a>	<a href="#">Q9P2X0;</a>
	Mouse	<a href="#">68563;</a>	<a href="#">Q9D1Q4;</a>
<b>Cellular Localization</b>	Endoplasmic reticulum membrane; Multi-pass membrane protein.		
<b>Function</b>	Function:Stabilizer subunit of the dolichol-phosphate-mannose synthase complex.,online information:GlycoGene database,similarity:Belongs to the DPM3 family.,subunit:Composed of three subunits; DPM1, DPM2 and DPM3. Associated with DPM1 via its C-terminal domain and with DPM2 via its N-terminal portion.,		

## | Validation Data



Immunohistochemical analysis of paraffin-embedded human Gastric adenocarcinoma. 1, Antibody was diluted at 1:200(4° overnight). 2, Tris-EDTA,pH9.0 was used for antigen retrieval. 3,Secondary antibody was diluted at 1:200(room temperature, 45min).

## | Contact information

Orders:           order@immunoway.com  
 Support:         tech@immunoway.com  
 Telephone:      877-594-3616 (Toll Free), 408-747-0185  
 Website:        http://www.immunoway.com  
 Address:         2200 Ringwood Ave San Jose, CA 95131 USA



Please scan the QR code to access additional product information:  
**DPM3 Rabbit pAb**