

LIPF Rabbit pAb

CatalogNo: YN3830

| Key Features

Host Species

- Rabbit

Reactivity

- Human, Mouse, Rat

Applications

- WB

MW

- 44kD (Calculated)

Isotype

- IgG

| Recommended Dilution Ratios

WB 1:500-2000

| Storage

Storage* -15°C to -25°C/1 year (Do not lower than -25°C)

Formulation Liquid in PBS containing 50% glycerol, 0.5% BSA and 0.02% sodium azide.

| Basic Information

Clonality Polyclonal

| Immunogen Information

Immunogen Synthesized peptide derived from human LIPG AA range: 222-272

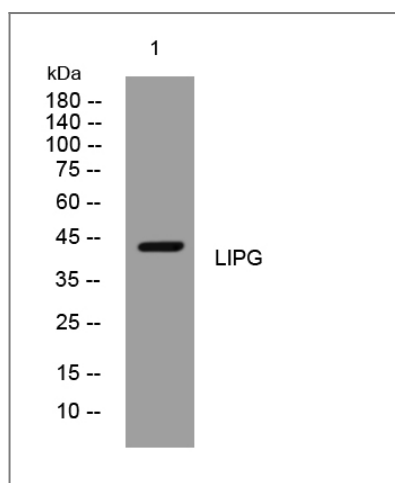
Specificity This antibody detects endogenous levels of LIPG at Human/Mouse/Rat

| Target Information

Gene name LIPF

Protein Name	Gastric triacylglycerol lipase		
	Organism	Gene ID	UniProt ID
	Human	8513;	P07098;
	Mouse	67717;	Q9CPP7;
Cellular Localization	Rat	50682;	P04634;
	Secreted .		
Function	Catalytic activity:Triacylglycerol + H(2)O = diacylglycerol + a carboxylate.,similarity:Belongs to the AB hydrolase superfamily. Lipase family.,		

Validation Data



Western blot analysis of lysates from HEK293 cells, primary antibody was diluted at 1:1000, 4°over night

Contact information

Orders: order@immunoway.com
 Support: tech@immunoway.com
 Telephone: 877-594-3616 (Toll Free), 408-747-0185
 Website: <http://www.immunoway.com>
 Address: 2200 Ringwood Ave San Jose, CA 95131 USA



Please scan the QR code to access additional product information:
LIPF Rabbit pAb