

MBOA7 Rabbit pAb

CatalogNo: YN3812

| Key Features

Host Species

- Rabbit

Reactivity

- Human, Mouse

Applications

- WB

MW

- 52kD (Calculated)

Isotype

- IgG

| Recommended Dilution Ratios

WB 1:500-2000

| Storage

Storage* -15°C to -25°C/1 year (Do not lower than -25°C)

Formulation Liquid in PBS containing 50% glycerol, 0.5% BSA and 0.02% sodium azide.

| Basic Information

Clonality Polyclonal

| Immunogen Information

Immunogen Synthesized peptide derived from human MBOA7 AA range: 293-343

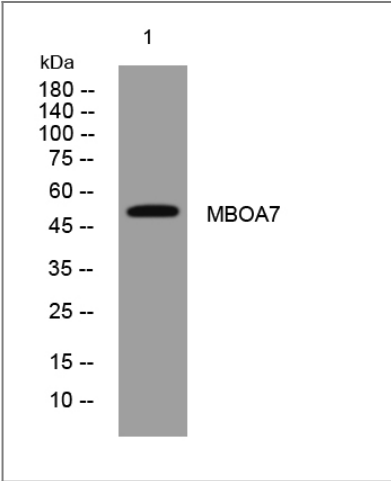
Specificity This antibody detects endogenous levels of MBOA7 at Human/Mouse

| Target Information

Gene name MBOAT7 BB1 LENG4 OACT7

Protein Name	MBOA7		
	Organism	Gene ID	UniProt ID
	Human	79143;	Q96N66;
	Mouse	77582;	Q8CHK3;
Cellular Localization	Endoplasmic reticulum membrane ; Multi-pass membrane protein . Localized in specific membrane structures termed mitochondria-associated membranes (MAMs) which connect the endoplasmic reticulum (ER) and the mitochondria. .		
Tissue specificity	Overexpressed in metastatic breast and bladder carcinomas relative to normal breast epithelium and urothelium.		
Function	Catalytic activity:Acyl-CoA + 1-acyl-sn-glycero-3-phosphatidylinositol = CoA + 1,2-diacyl-sn-glycero-3-phosphatidylinositol.,enzyme regulation:Activity is inhibited by thimerosal.,Function:Acyltransferase which mediates the conversion of lysophosphatidylinositol (1-acylglycerophosphatidylinositol or LPI) into phosphatidylinositol (1,2-diacyl-sn-glycero-3-phosphoinositol or PI) (LPIAT activity). Prefers arachidonoyl-CoA as the acyl donor. Lysophospholipid acyltransferases (LPLATs) catalyze the reacylation step of the phospholipid remodeling pathway also known as the Lands cycle.,pathway:Lipid metabolism; phospholipid metabolism.,similarity:Belongs to the membrane-bound acyltransferase family.,tissue specificity:Overexpressed in metastatic breast and bladder carcinomas relative to normal breast epithelium and urothelium.,		

Validation Data



Western blot analysis of lysates from U2OS cells, primary antibody was diluted at 1:1000, 4°over night

Contact information

Orders: order@immunoway.com
Support: tech@immunoway.com
Telephone: 877-594-3616 (Toll Free), 408-747-0185
Website: <http://www.immunoway.com>
Address: 2200 Ringwood Ave San Jose, CA 95131 USA



Please scan the QR code
to access additional
product information:
MBOA7 Rabbit pAb

For Research Use Only. Not for Use in Diagnostic Procedures.

[Antibody](#) | [ELISA Kits](#) | [Protein](#) | [Reagents](#)