

CAR18 Rabbit pAb

CatalogNo: YN3811

Key Features

Host Species

- Rabbit

Reactivity

- Human

Applications

- IHC,IF

MW

- 10kD (Calculated)

Isotype

- IgG

Recommended Dilution Ratios

IHC 1:50-200

IF 1:50-200

Storage

Storage* -15°C to -25°C/1 year(Do not lower than -25°C)

Formulation Liquid in PBS containing 50% glycerol, 0.5% BSA and 0.02% sodium azide.

Basic Information

Clonality Polyclonal

Immunogen Information

Immunogen Synthesized peptide derived from human CAR18 AA range: 30-110

Specificity This antibody detects endogenous levels of CAR18 at Human

Target Information

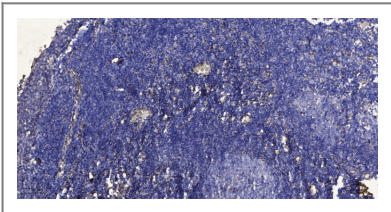
Gene name CARD18 ICEBERG UNQ5804/PRO19611

Protein Name	CAR18		
	Organism	Gene ID	UniProt ID
	Human	59082 ;	P57730 ;

Tissue specificity Primarily expressed in the heart and placenta.

Function Function:Inhibits generation of IL-1-beta by interacting with caspase-1 and preventing its association with RIP2.,similarity:Contains 1 CARD domain.,subunit:Interacts with pro-CASP1. Interacts with CARD8.,tissue specificity:Primarily expressed in the heart and placenta.,

| Validation Data



Immunohistochemical analysis of paraffin-embedded human tonsil. 1, Antibody was diluted at 1:200(4° overnight). 2, Tris-EDTA,pH9.0 was used for antigen retrieval. 3,Secondary antibody was diluted at 1:200(room temperature, 30min).

| Contact information

Orders: order@immunoway.com
Support: tech@immunoway.com
Telephone: 877-594-3616 (Toll Free), 408-747-0185
Website: http://www.immunoway.com
Address: 2200 Ringwood Ave San Jose, CA 95131 USA



Please scan the QR code to access additional product information:
CAR18 Rabbit pAb