

PIGU Rabbit pAb

CatalogNo: YN3807

| Key Features

Host Species

- Rabbit

Reactivity

- Human, Mouse, Rat

Applications

- WB

MW

- 48kD (Calculated)

Isotype

- IgG

| Recommended Dilution Ratios

WB 1:500-2000

| Storage

Storage* -15°C to -25°C/1 year (Do not lower than -25°C)

Formulation Liquid in PBS containing 50% glycerol, 0.5% BSA and 0.02% sodium azide.

| Basic Information

Clonality Polyclonal

| Immunogen Information

Immunogen Synthesized peptide derived from human PIGU AA range: 313-363

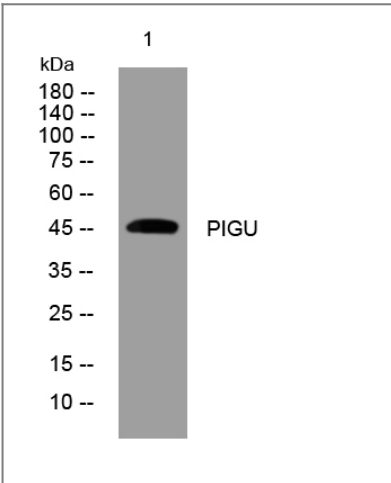
Specificity This antibody detects endogenous levels of PIGU at Human/Mouse/Rat

| Target Information

Gene name PIGU CDC91L1 PSEC0205 UNQ3055/PRO9875

Protein Name	PIGU		
	Organism	Gene ID	UniProt ID
	Human	128869 ;	Q9H490 ;
	Mouse		Q8K358 ;
	Rat	353304 ;	Q8CHJ1 ;
Cellular Localization	Endoplasmic reticulum membrane ; Multi-pass membrane protein .		
Function	Function:Component of the GPI transamidase complex. May be involved in the recognition of either the GPI attachment signal or the lipid portion of GPI.,pathway:Glycolipid biosynthesis; glycosylphosphatidylinositol-anchor biosynthesis.,similarity:Belongs to the PIGU family.,subunit:Forms a complex with PIGK/GPI8, PIGS, PIGT and GPAA1/GAA1.,		

Validation Data



Western blot analysis of lysates from Hela cells, primary antibody was diluted at 1:1000, 4°over night

Contact information

Orders:

order@immunoway.com

Support:

tech@immunoway.com

Telephone:

877-594-3616 (Toll Free), 408-747-0185

Website:

http://www.immunoway.com

Address:

2200 Ringwood Ave San Jose, CA 95131 USA



Please scan the QR code to access additional product information:
PIGU Rabbit pAb