

## VPS18 Rabbit pAb

CatalogNo: YN3806

### Key Features

#### Host Species

- Rabbit

#### Reactivity

- Human, Mouse

#### Applications

- WB

#### MW

- 107kD (Calculated)

#### Isotype

- IgG

### Recommended Dilution Ratios

WB 1:500-2000

### Storage

#### Storage\*

-15°C to -25°C/1 year (Do not lower than -25°C)

#### Formulation

Liquid in PBS containing 50% glycerol, 0.5% BSA and 0.02% sodium azide.

### Basic Information

#### Clonality

Polyclonal

### Immunogen Information

#### Immunogen

Synthesized peptide derived from human VPS18 AA range: 778-828

#### Specificity

This antibody detects endogenous levels of VPS18 at Human/Mouse

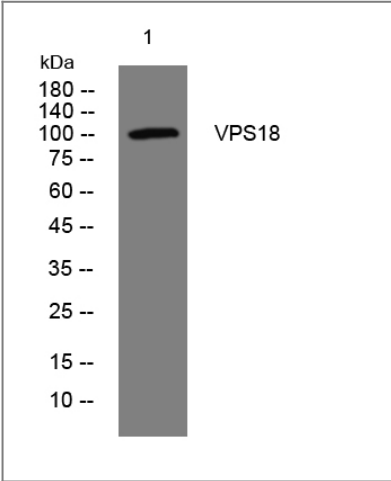
### Target Information

#### Gene name

VPS18 KIAA1475

<b>Protein Name</b>	VPS18		
	<b>Organism</b>	<b>Gene ID</b>	<b>UniProt ID</b>
	Human	<a href="#">57617;</a>	<a href="#">Q9P253;</a>
	Mouse	<a href="#">228545;</a>	<a href="#">Q8R307;</a>
<b>Cellular Localization</b>	Late endosome membrane ; Peripheral membrane protein ; Cytoplasmic side . Lysosome membrane ; Peripheral membrane protein ; Cytoplasmic side . Early endosome . Cytoplasmic vesicle, autophagosome . Cytoplasmic vesicle, clathrin-coated vesicle . Cytoplasmic, peripheral membrane protein associated with early endosomes and late endosomes/lysosomes.		
<b>Tissue specificity</b>	Ubiquitous. Expression was highest in heart and low in lung.		
<b>Function</b>	Function:May play a role in vesicle-mediated protein trafficking to lysosomal compartments and in membrane docking/fusion reactions of late endosomes/lysosomes.,similarity:Belongs to the VPS18 family.,similarity:Contains 1 clathrin repeat.,similarity:Contains 1 RING-type zinc finger.,subcellular location:Cytoplasmic, peripheral membrane protein associated with late endosomes/lysosomes.,subunit:Interacts with HOOK1 (By similarity). Large hetero-oligomeric complex together with VPS11, VPS16 and VPS33A. Interacts with STX7.,tissue specificity:Ubiquitous. Expression was highest in heart and low in lung.,		

Validation Data



Western blot analysis of lysates from DU145 cells, primary antibody was diluted at 1:1000, 4°over night

Contact information

Orders: order@immunoway.com  
Support: tech@immunoway.com  
Telephone: 877-594-3616 (Toll Free), 408-747-0185  
Website: http://www.immunoway.com  
Address: 2200 Ringwood Ave San Jose, CA 95131 USA



Please scan the QR code to access additional product information:  
**VPS18 Rabbit pAb**

