

## S22AC Rabbit pAb

CatalogNo: YN3803

Orthogonal Validated 

### Key Features

#### Host Species

- Rabbit

#### Reactivity

- Human, Mouse, Rat

#### Applications

- WB

#### MW

- 61kD (Calculated)

#### Isotype

- IgG

### Recommended Dilution Ratios

**WB 1:500-2000**

### Storage

**Storage\***

-15°C to -25°C/1 year (Do not lower than -25°C)

**Formulation**

Liquid in PBS containing 50% glycerol, 0.5% BSA and 0.02% sodium azide.

### Basic Information

**Clonality**

Polyclonal

### Immunogen Information

**Immunogen**

Synthesized peptide derived from human S22AC AA range: 18-68

**Specificity**

This antibody detects endogenous levels of S22AC at Human/Mouse/Rat

### Target Information

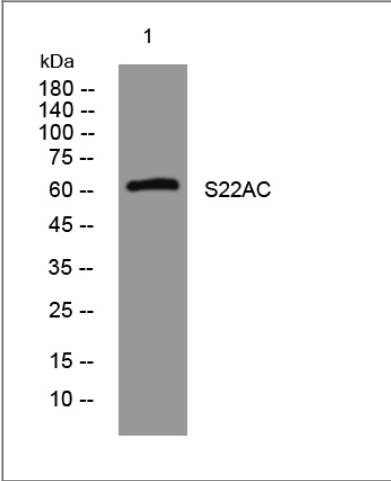
**Gene name**

SLC22A12 OATL4 URAT1 UNQ6453/PRO34004

<b>Protein Name</b>	S22AC		
	<b>Organism</b>	<b>Gene ID</b>	<b>UniProt ID</b>
	Human	<a href="#">116085</a> ;	<a href="#">Q96S37</a> ;
	Mouse	<a href="#">20521</a> ;	<a href="#">Q8CFZ5</a> ;
	Rat	<a href="#">365398</a> ;	<a href="#">Q3ZAV1</a> ;

<b>Cellular Localization</b>	Cell membrane ; Multi-pass membrane protein . Apical cell membrane ; Multi-pass membrane protein .
<b>Tissue specificity</b>	Detected in kidney (at protein level). Detected in fetal and adult kidney. Detected in epithelial cells of proximal tubules in renal cortex.
<b>Function</b>	Disease:Defects in SLC22A12 are a cause of renal hypouricemia (RH) [MIM:220150]. Patients have low serum urate levels, due to defects in renal urate re-absorption and high urinary urate excretion. Patients often appear asymptomatic, but may be subject to exercise-induced acute renal failure (ARF), chronic renal dysfunction and uric acid urolithiasis.,Function:Required for efficient urate re-absorption in the kidney. Regulates blood urate levels. Mediates saturable urate uptake by facilitating the exchange of urate against organic anions.,similarity:Belongs to the major facilitator superfamily. Organic cation transporter family.,subcellular location:Detected in the luminal membrane of the epithelium of renal proximal tubules.,subunit:Interacts with PDZK1.,tissue specificity:Detected in kidney (at protein level). Detected in fetal and adult kidney. Detected in epithelial cells of proximal tubules in renal cortex.,

Validation Data



Western blot analysis of lysates from MCF-7 cells, primary antibody was diluted at 1:1000, 4°over night

Contact information

Orders: order@immunoway.com  
Support: tech@immunoway.com  
Telephone: 877-594-3616 (Toll Free), 408-747-0185  
Website: <http://www.immunoway.com>  
Address: 2200 Ringwood Ave San Jose, CA 95131 USA



Please scan the QR code  
to access additional  
product information:  
**S22AC Rabbit pAb**

---

For Research Use Only. Not for Use in Diagnostic Procedures.

[Antibody](#) | [ELISA Kits](#) | [Protein](#) | [Reagents](#)