

TTY2 Rabbit pAb

CatalogNo: YN3794

| Key Features

Host Species

- Rabbit

Reactivity

- Human, Mouse, Rat

Applications

- WB

MW

- 41kD (Calculated)

Isotype

- IgG

| Recommended Dilution Ratios

WB 1:500-2000

| Storage

Storage*

-15°C to -25°C/1 year(Do not lower than -25°C)

Formulation

Liquid in PBS containing 50% glycerol, 0.5% BSA and 0.02% sodium azide.

| Basic Information

Clonality

Polyclonal

| Immunogen Information

Immunogen

Synthesized peptide derived from human TTY2 AA range: 9-59

Specificity

This antibody detects endogenous levels of TTY2 at Human/Mouse/Rat

| Target Information

Gene name

YY2 ZNF631

Protein Name TYY2

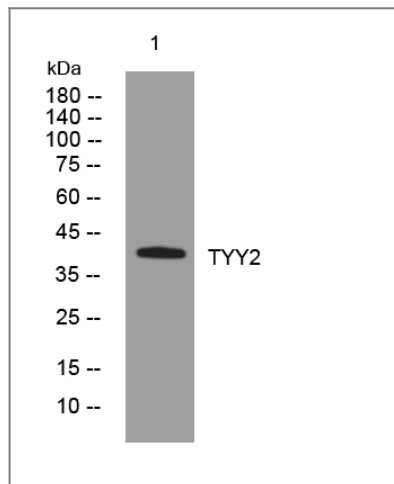
Organism	Gene ID	UniProt ID
Human	404281 ;	O15391 ;
Mouse	100073351 ;	Q3TTC2 ;
Rat		P0C6P6 ;

Cellular Localization Nucleus .

Tissue specificity Expressed in kidney, liver, spleen and testis but not in colon.

Function Function:Functions as a multifunctional transcription factor that may exhibit positive and negative control on a large number of genes. May antagonize YY1 and function in development and differentiation.,miscellaneous:The gene encoding this protein appears to have arisen by retrotransposition of the YY1 gene in placental mammals. It is encoded by a single exon found in an intron of the gene Mbtps2.,similarity:Belongs to the YY transcription factor family.,similarity:Contains 4 C2H2-type zinc fingers.,tissue specificity:Expressed in kidney, liver, spleen and testis but not in colon.,

Validation Data



Western blot analysis of lysates from MCF-7 cells, primary antibody was diluted at 1:1000, 4°over night

Contact information

Orders: order@immunoway.com
Support: tech@immunoway.com
Telephone: 877-594-3616 (Toll Free), 408-747-0185
Website: <http://www.immunoway.com>
Address: 2200 Ringwood Ave San Jose, CA 95131 USA



Please scan the QR code to access additional product information:
TYY2 Rabbit pAb

