

RABX5 Rabbit pAb

CatalogNo: YN3784

Key Features

Host Species

- Rabbit

Reactivity

- Human, Mouse

Applications

- WB

MW

- 78kD (Calculated)

Isotype

- IgG

Recommended Dilution Ratios

WB 1:500-2000

Storage

Storage*

-15°C to -25°C/1 year (Do not lower than -25°C)

Formulation

Liquid in PBS containing 50% glycerol, 0.5% BSA and 0.02% sodium azide.

Basic Information

Clonality

Polyclonal

Immunogen Information

Immunogen

Synthesized peptide derived from human RABX5 AA range: 291-341

Specificity

This antibody detects endogenous levels of RABX5 at Human/Mouse

Target Information

Gene name

RABGEF1 RABEX5

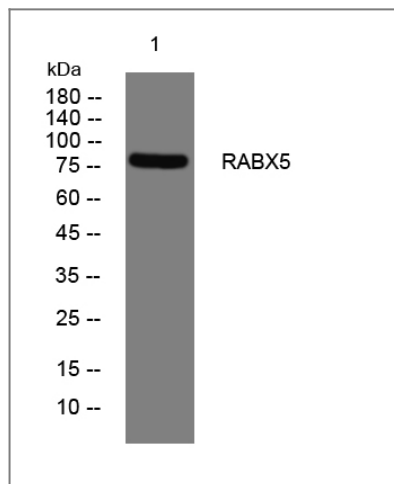
Protein Name RABX5

Organism	Gene ID	UniProt ID
Human	27342;	Q9UJ41;
Mouse	56715;	Q9JLM13;

Cellular Localization Cytoplasm . Early endosome . Recycling endosome .

Function Function: Rab effector protein acting as linker between gamma-adaptin, RAB4A or RAB5A. Involved in endocytic membrane fusion and membrane trafficking of recycling endosomes. Stimulates nucleotide exchange on RAB5A. Can act as a ubiquitin ligase., PTM: Monoubiquitinated., similarity: Contains 1 A20-type zinc finger., similarity: Contains 1 VPS9 domain., subunit: Heterodimer with RABEP1. The heterodimer binds RAB4A and RAB5A that have been activated by GTP-binding. Interacts with RAB21, and with 100-fold lower affinity also with RAB22. Binds TSC2, GGA1, GGA2, GGA3, AP1G1 and AP1G2. Interacts with ubiquitinated EGFR.,

Validation Data



Western blot analysis of lysates from PC-12 cells, primary antibody was diluted at 1:1000, 4° over night

Contact information

Orders: order@immunoway.com
Support: tech@immunoway.com
Telephone: 877-594-3616 (Toll Free), 408-747-0185
Website: <http://www.immunoway.com>
Address: 2200 Ringwood Ave San Jose, CA 95131 USA



Please scan the QR code to access additional product information:
RABX5 Rabbit pAb

