

CCD23 Rabbit pAb

CatalogNo: YN3771

| Key Features

Host Species

- Rabbit

Reactivity

- Human, Mouse, Rat

Applications

- IHC, IF

MW

- 7kD (Calculated)

Isotype

- IgG

| Recommended Dilution Ratios

IHC 1:50-200

IF 1:50-200

| Storage

Storage* -15°C to -25°C/1 year (Do not lower than -25°C)

Formulation Liquid in PBS containing 50% glycerol, 0.5% BSA and 0.02% sodium azide.

| Basic Information

Clonality Polyclonal

| Immunogen Information

Immunogen Synthesized peptide derived from human CCD23 AA range: 13-63

Specificity This antibody detects endogenous levels of CCD23 at Human/Mouse/Rat

| Target Information

Gene name CCDC23

Protein Name CCD23

Organism	Gene ID	UniProt ID
Human	374969 ;	Q8N300 ;
Mouse	69216 ;	Q99LQ4 ;
Rat	362578 ;	Q4KLG3 ;

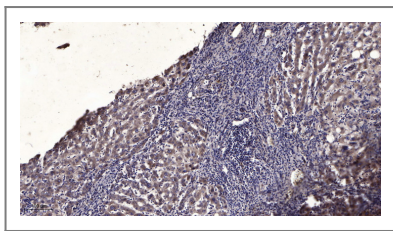
Cellular Localization

Cytoplasm . Secreted . Cytoplasm, cytoskeleton . Detected both intracellularly and extracellularly (By similarity). Within cells, localizes mainly to the apical part of the cell (By similarity). .

Function

similarity:Belongs to the CCDC23 family.,

Validation Data



Immunohistochemical analysis of paraffin-embedded human liver cancer. 1, Antibody was diluted at 1:200(4° overnight). 2, Tris-EDTA,pH9.0 was used for antigen retrieval. 3,Secondary antibody was diluted at 1:200(room temperature, 45min).

Contact information

Orders: order@immunoway.com
Support: tech@immunoway.com
Telephone: 877-594-3616 (Toll Free), 408-747-0185
Website: <http://www.immunoway.com>
Address: 2200 Ringwood Ave San Jose, CA 95131 USA



Please scan the QR code to access additional product information:
CCD23 Rabbit pAb

For Research Use Only. Not for Use in Diagnostic Procedures.

[Antibody](#) | [ELISA Kits](#) | [Protein](#) | [Reagents](#)