

## RNAS8 Rabbit pAb

CatalogNo: YN3750

### Key Features

#### Host Species

- Rabbit

#### Reactivity

- Human

#### Applications

- WB

#### MW

- 17kD (Calculated)

#### Isotype

- IgG

### Recommended Dilution Ratios

WB 1:500-2000

### Storage

**Storage\*** -15°C to -25°C/1 year(Do not lower than -25°C)

**Formulation** Liquid in PBS containing 50% glycerol, 0.5% BSA and 0.02% sodium azide.

### Basic Information

**Clonality** Polyclonal

### Immunogen Information

**Immunogen** Synthesized peptide derived from human RNAS8 AA range: 27-77

**Specificity** This antibody detects endogenous levels of RNAS8 at Human

### Target Information

**Gene name** RNASE8

**Protein Name** RNAS8

**Organism**

**Gene ID**

**UniProt ID**

Human

[122665;](#)

[Q8TDE3;](#)

**Cellular  
Localization**

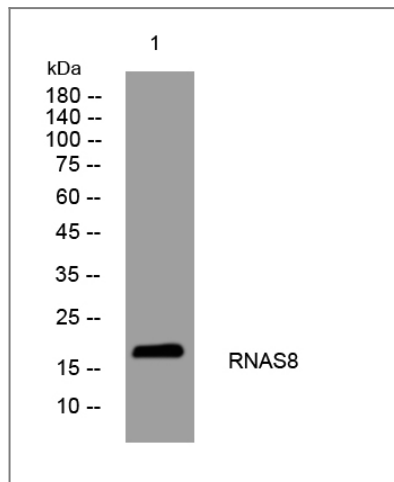
Secreted .

**Tissue specificity** Expressed prominently in the placenta and is not detected in any other tissues examined.

**Function**

Function:Has a low ribonuclease activity.,similarity:Belongs to the pancreatic ribonuclease family.,tissue specificity:Expressed prominently in the placenta and is not detected in any other tissues examined.,

## Validation Data



Western blot analysis of lysates from MCF-7 cells, primary antibody was diluted at 1:1000, 4°over night

## Contact information

Orders: [order@immunoway.com](mailto:order@immunoway.com)  
Support: [tech@immunoway.com](mailto:tech@immunoway.com)  
Telephone: 877-594-3616 (Toll Free), 408-747-0185  
Website: <http://www.immunoway.com>  
Address: 2200 Ringwood Ave San Jose, CA 95131 USA



Please scan the QR code to access additional product information:  
**RNAS8 Rabbit pAb**

For Research Use Only. Not for Use in Diagnostic Procedures.

[Antibody](#) | [ELISA Kits](#) | [Protein](#) | [Reagents](#)