

ENOPH Rabbit pAb

CatalogNo: YN3721

Key Features

Host Species

- Rabbit

Reactivity

- Human, Mouse, Rat

Applications

- WB

MW

- 29kD (Calculated)

Isotype

- IgG

Recommended Dilution Ratios

WB 1:500-2000

Storage

Storage* -15°C to -25°C/1 year (Do not lower than -25°C)

Formulation Liquid in PBS containing 50% glycerol, 0.5% BSA and 0.02% sodium azide.

Basic Information

Clonality Polyclonal

Immunogen Information

Immunogen Synthesized peptide derived from human ENOPH AA range: 112-162

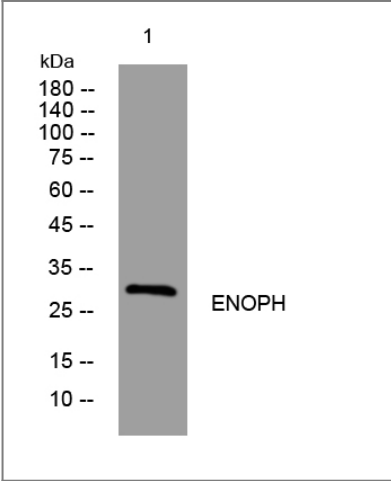
Specificity This antibody detects endogenous levels of ENOPH at Human/Mouse/Rat

Target Information

Gene name ENOPH1 MASA MSTP145

Protein Name	ENOPH		
	Organism	Gene ID	UniProt ID
	Human	58478;	Q9UHY7;
	Mouse	67870;	Q8BGB7;
	Rat	305177;	Q5PPH0;
Cellular Localization	Cytoplasm . Nucleus .		
Function	Catalytic activity:5-(methylthio)-2,3-dioxopentyl phosphate + H(2)O = 1,2-dihydroxy-5-(methylthio)pent-1-en-3-one + phosphate.,cofactor:Binds 1 magnesium ion per subunit.,Function:Bifunctional enzyme that enolizes the substrate to form the intermediate 2-hydroxy-5-(methylthio)-3-oxopent-1-enyl phosphate, which is then dephosphorylated to form the acireductone 1,2-dihydroxy-5-(methylthio)pent-1-en-3-one.,pathway:Amino-acid biosynthesis; L-methionine biosynthesis via salvage pathway; L-methionine from (S)-methyl-5-thio-alpha-D-ribose 1-phosphate: step 3/6.,pathway:Amino-acid biosynthesis; L-methionine biosynthesis via salvage pathway; L-methionine from (S)-methyl-5-thio-alpha-D-ribose 1-phosphate: step 4/6.,similarity:Belongs to the HAD-like hydrolase superfamily. MasA/mtnC family.,subunit:Monomer.,		

Validation Data



Western blot analysis of lysates from DU145 cells, primary antibody was diluted at 1:1000, 4°over night

Contact information

Orders: order@immunoway.com
Support: tech@immunoway.com
Telephone: 877-594-3616 (Toll Free), 408-747-0185
Website: http://www.immunoway.com
Address: 2200 Ringwood Ave San Jose, CA 95131 USA



Please scan the QR code to access additional product information:
ENOPH Rabbit pAb

