

## CN139 Rabbit pAb

CatalogNo: YN3706

### | Key Features

#### Host Species

- Rabbit

#### Reactivity

- Human,Rat,Mouse,

#### Applications

- WB

#### MW

- 21kD (Calculated)

#### Isotype

- IgG

### | Recommended Dilution Ratios

WB 1:500-2000

### | Storage

#### Storage\*

-15°C to -25°C/1 year(Do not lower than -25°C)

#### Formulation

Liquid in PBS containing 50% glycerol, 0.5% BSA and 0.02% sodium azide.

### | Basic Information

#### Clonality

Polyclonal

### | Immunogen Information

#### Immunogen

Synthesized peptide derived from human CN139 AA range: 68-118

#### Specificity

This antibody detects endogenous levels of CN139 at Human

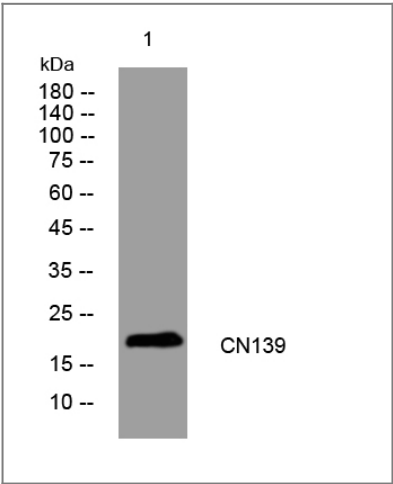
### | Target Information

#### Gene name

LINC00341 C14orf139

Protein Name	CN139		
	Organism	Gene ID	UniProt ID
	Human		<a href="#">Q9H761</a> ;

## Validation Data



Western blot analysis of lysates from Hela cells, primary antibody was diluted at 1:1000, 4°over night

## Contact information

Orders: [order@immunoway.com](mailto:order@immunoway.com)  
Support: [tech@immunoway.com](mailto:tech@immunoway.com)  
Telephone: 877-594-3616 (Toll Free), 408-747-0185  
Website: <http://www.immunoway.com>  
Address: 2200 Ringwood Ave San Jose, CA 95131 USA



Please scan the QR code to access additional product information:  
**CN139 Rabbit pAb**

For Research Use Only. Not for Use in Diagnostic Procedures.

[Antibody](#) | [ELISA Kits](#) | [Protein](#) | [Reagents](#)