

PTBP3 Rabbit pAb

CatalogNo: YN3670

| Key Features

Host Species

- Rabbit

Reactivity

- Human, Mouse, Rat

Applications

- WB

MW

- 61kD (Calculated)

Isotype

- IgG

| Recommended Dilution Ratios

WB 1:500-2000

| Storage

Storage*

-15°C to -25°C/1 year (Do not lower than -25°C)

Formulation

Liquid in PBS containing 50% glycerol, 0.5% BSA and 0.02% sodium azide.

| Basic Information

Clonality

Polyclonal

| Immunogen Information

Immunogen

Synthesized peptide derived from human PTBP3 AA range: 103-153

Specificity

This antibody detects endogenous levels of PTBP3 at Human/Mouse/Rat

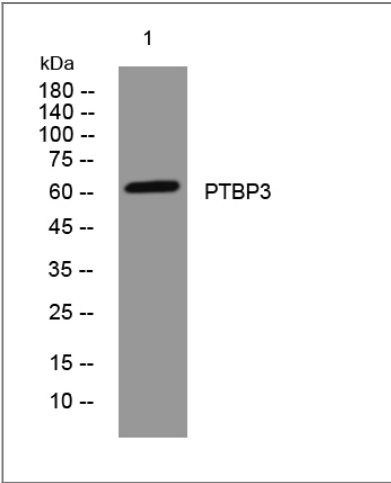
| Target Information

Gene name

PTBP3 ROD1

Protein Name	PTBP3		
	Organism	Gene ID	UniProt ID
	Human	9991 ;	O95758 ;
	Mouse	230257 ;	Q8BHD7 ;
	Rat	83515 ;	Q9Z118 ;
Cellular Localization	nucleus,		
Tissue specificity	Expressed in several hematopoietic cell lines examined.		
Function	Function:May play a role in regulation of differentiation. In vitro, binds RNA, preferentially to both poly(G) and poly(U). Overexpressed, blocks differentiation of K562 leukemia cells following treatment with phorbol esters or sodium butyrate without affecting proliferation.,similarity:Contains 4 RRM (RNA recognition motif) domains.,tissue specificity:Expressed in several hematopoietic cell lines examined.,		

Validation Data



Western blot analysis of lysates from SW480 cells, primary antibody was diluted at 1:1000, 4°over night

Contact information

Orders: order@immunoway.com
 Support: tech@immunoway.com
 Telephone: 877-594-3616 (Toll Free), 408-747-0185
 Website: <http://www.immunoway.com>
 Address: 2200 Ringwood Ave San Jose, CA 95131 USA



Please scan the QR code
 to access additional
 product information:
PTBP3 Rabbit pAb

