

UBR3 Rabbit pAb

CatalogNo: YN3658

Key Features

Host Species

- Rabbit

Reactivity

- Human, Mouse

Applications

- WB

MW

- 208kD (Calculated)

Isotype

- IgG

Recommended Dilution Ratios

WB 1:500-2000

Storage

Storage*

-15°C to -25°C/1 year (Do not lower than -25°C)

Formulation

Liquid in PBS containing 50% glycerol, 0.5% BSA and 0.02% sodium azide.

Basic Information

Clonality

Polyclonal

Immunogen Information

Immunogen

Synthesized peptide derived from human UBR3 AA range: 1591-1641

Specificity

This antibody detects endogenous levels of UBR3 at Human/Mouse

Target Information

Gene name

UBR3 KIAA2024 ZNF650

Protein Name

UBR3

Organism**Gene ID****UniProt ID**

Human

[130507;](#)[Q6ZT12;](#)

Mouse

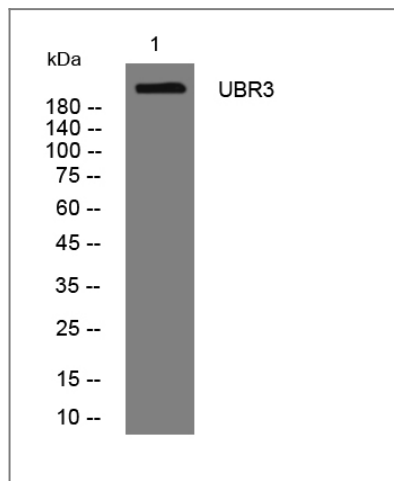
[68795;](#)[Q5U430;](#)**Cellular
Localization**

Membrane ; Multi-pass membrane protein .

Function

Function:E3 ubiquitin-protein ligase which is a component of the N-end rule pathway. Does not bind to proteins bearing specific N-terminal residues that are destabilizing according to the N-end rule, leading to their ubiquitination and subsequent degradation.,pathway:Protein modification; protein ubiquitination.,sequence Caution:Translated as Gln.,similarity:Belongs to the UBR1 family.,similarity:Contains 1 RING-type zinc finger.,similarity:Contains 1 UBR-type zinc finger.,subunit:Interacts with UBE2A and UBE2B.,

| Validation Data



Western blot analysis of lysates from THP-1 cells, primary antibody was diluted at 1:1000, 4°over night

| Contact information

Orders: order@immunoway.com
Support: tech@immunoway.com
Telephone: 877-594-3616 (Toll Free), 408-747-0185
Website: <http://www.immunoway.com>
Address: 2200 Ringwood Ave San Jose, CA 95131 USA



Please scan the QR code to access additional product information:
UBR3 Rabbit pAb