

## CE025 Rabbit pAb

CatalogNo: YN3646

### | Key Features

#### Host Species

- Rabbit

#### Reactivity

- Human,Rat,Mouse,

#### Applications

- WB

#### MW

- 96kD (Calculated)

#### Isotype

- IgG

### | Recommended Dilution Ratios

WB 1:500-2000

### | Storage

#### Storage\*

-15°C to -25°C/1 year(Do not lower than -25°C)

#### Formulation

Liquid in PBS containing 50% glycerol, 0.5% BSA and 0.02% sodium azide.

### | Basic Information

#### Clonality

Polyclonal

### | Immunogen Information

#### Immunogen

Synthesized peptide derived from human CE025 AA range: 369-419

#### Specificity

This antibody detects endogenous levels of CE025 at Human

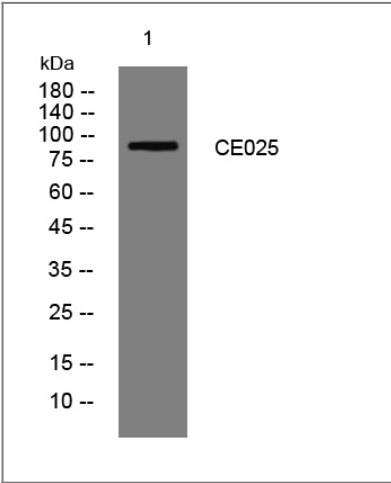
### | Target Information

#### Gene name

C5orf25

<b>Protein Name</b>	CE025		
	<b>Organism</b>	<b>Gene ID</b>	<b>UniProt ID</b>
	Human	<a href="#">375484;</a>	<a href="#">Q8NDZ2;</a>
<b>Cellular Localization</b>	[Isoform 5]: Cytoplasm . Cytoplasm, myofibril, sarcomere .		
<b>Tissue specificity</b>	[Isoform 5]: Skeletal muscle.		
<b>Function</b>	PTM:Phosphorylated upon DNA damage, probably by ATM or ATR.,		

| Validation Data



Western blot analysis of lysates from 3T3 cells, primary antibody was diluted at 1:1000, 4°over night

| Contact information

Orders:

order@immunoway.com

Support:

tech@immunoway.com

Telephone:

877-594-3616 (Toll Free), 408-747-0185

Website:

http://www.immunoway.com

Address:

2200 Ringwood Ave San Jose, CA 95131 USA



Please scan the QR code to access additional product information:  
**CE025 Rabbit pAb**