

GUC1A Rabbit pAb

CatalogNo: YN3625

| Key Features

Host Species

- Rabbit

Reactivity

- Human, Mouse

Applications

- WB

MW

- 22kD (Calculated)

Isotype

- IgG

| Recommended Dilution Ratios

WB 1:500-2000

| Storage

Storage* -15°C to -25°C/1 year (Do not lower than -25°C)

Formulation Liquid in PBS containing 50% glycerol, 0.5% BSA and 0.02% sodium azide.

| Basic Information

Clonality Polyclonal

| Immunogen Information

Immunogen Synthesized peptide derived from human GUC1A AA range: 63-113

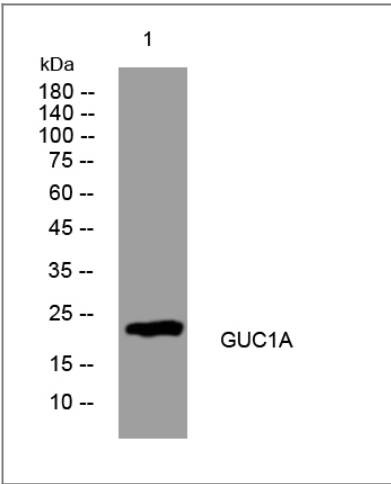
Specificity This antibody detects endogenous levels of GUC1A at Human/Mouse

| Target Information

Gene name GUCA1A C6orf131 GCAP GCAP1 GUCA1

Protein Name	GUC1A		
	Organism	Gene ID	UniProt ID
	Human	2978;	P43080;
	Mouse	14913;	P43081;
Cellular Localization	Membrane; Lipid-anchor . Photoreceptor inner segment . Cell projection, cilium, photoreceptor outer segment . Present at higher levels in cone than in rod outer segments (PubMed:9620085). Subcellular location is not affected by light or dark conditions. .		
Tissue specificity	In the retina, it is expressed in rod and cone photoreceptors.		
Function	<p>Disease:Defects in GUCA1A are the cause of cone dystrophy type 3 (COD3) [MIM:602093]. COD3 is an autosomal dominant cone dystrophy. Cone dystrophies are retinal dystrophies characterized by progressive degeneration of the cone photoreceptors with preservation of rod function, as indicated by electroretinogram. However, some rod involvement may be present in some cone dystrophies, particularly at late stage. Affected individuals suffer from photophobia, loss of visual acuity, color vision and central visual field. Another sign is the absence of macular lesions for many years. Cone dystrophies are distinguished from the cone-rod dystrophies, in which some loss of peripheral vision also occurs.,Function:Stimulates guanylyl cyclase 1 (GC1) when free calcium ions concentration is low and inhibits GC1 when free calcium ions concentration is elevated. This Ca(2+)-sensitive regulation of GC is a key event in recovery of the dark state of rod photoreceptors following light exposure.,miscellaneous:Binds three calcium ions.,online information:Retina International's Scientific Newsletter,similarity:Contains 4 EF-hand domains.,tissue specificity:Retina; cone outer and inner segments, in particular, in disk membrane regions, and to a lesser extent rod inner and outer segments.,</p>		

| Validation Data



Western blot analysis of lysates from HpeG2 cells, primary antibody was diluted at 1:1000, 4°over night

| Contact information

Orders: order@immunoway.com
Support: tech@immunoway.com
Telephone: 877-594-3616 (Toll Free), 408-747-0185
Website: <http://www.immunoway.com>
Address: 2200 Ringwood Ave San Jose, CA 95131 USA



Please scan the QR code
to access additional
product information:
GUC1A Rabbit pAb

For Research Use Only. Not for Use in Diagnostic Procedures.

[Antibody](#) | [ELISA Kits](#) | [Protein](#) | [Reagents](#)