

## ZUFSP Rabbit pAb

CatalogNo: YN3612

### | Key Features

#### Host Species

- Rabbit

#### Reactivity

- Human, Mouse, Rat

#### Applications

- WB

#### MW

- 64kD (Calculated)

#### Isotype

- IgG

### | Recommended Dilution Ratios

WB 1:500-2000

### | Storage

**Storage\*** -15°C to -25°C/1 year (Do not lower than -25°C)

**Formulation** Liquid in PBS containing 50% glycerol, 0.5% BSA and 0.02% sodium azide.

### | Basic Information

**Clonality** Polyclonal

### | Immunogen Information

**Immunogen** Synthesized peptide derived from human ZUFSP AA range: 89-139

**Specificity** This antibody detects endogenous levels of ZUFSP at Human/Mouse/Rat

### | Target Information

**Gene name** ZUFSP C6orf113

**Protein Name** ZUFSP

Organism	Gene ID	UniProt ID
Human	<a href="#">221302;</a>	<a href="#">Q96AP4;</a>
Mouse	<a href="#">72580;</a>	<a href="#">Q3T9Z9;</a>
Rat	<a href="#">294390;</a>	<a href="#">Q5U2S3;</a>

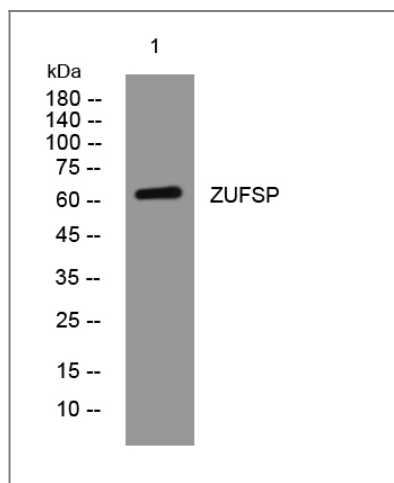
**Cellular Localization**

Cytoplasm . Nucleus . Mostly present in the nuclear fraction. Localizes to DNA lesions. .

**Function**

Caution:Although related to the Ufm1-specific proteases, it lacks the conserved His active site, suggesting that it is probably inactive.,similarity:Contains 3 C2H2-type zinc fingers.,

## Validation Data



Western blot analysis of lysates from HuvEc cells, primary antibody was diluted at 1:1000, 4°over night

## Contact information

Orders: order@immunoway.com  
Support: tech@immunoway.com  
Telephone: 877-594-3616 (Toll Free), 408-747-0185  
Website: <http://www.immunoway.com>  
Address: 2200 Ringwood Ave San Jose, CA 95131 USA



Please scan the QR code to access additional product information:  
**ZUFSP Rabbit pAb**