

TXLNG Rabbit pAb

CatalogNo: YN3608

| Key Features

Host Species

- Rabbit

Reactivity

- Human, Mouse

Applications

- WB

MW

- 58kD (Calculated)

Isotype

- IgG

| Recommended Dilution Ratios

WB 1:500-2000

| Storage

Storage*

-15°C to -25°C/1 year (Do not lower than -25°C)

Formulation

Liquid in PBS containing 50% glycerol, 0.5% BSA and 0.02% sodium azide.

| Basic Information

Clonality

Polyclonal

| Immunogen Information

Immunogen

Synthesized peptide derived from human TXLNG AA range: 219-269

Specificity

This antibody detects endogenous levels of TXLNG at Human/Mouse

| Target Information

Gene name

TXLNG CXorf15 ELRG LSR5

Protein Name TXLNG

Organism

Gene ID

UniProt ID

Human

[55787;](#)

[Q9NUQ3;](#)

Mouse

[353170;](#)

[Q8BHN1;](#)

**Cellular
Localization**

Nucleus membrane . Cytoplasm, cytosol .

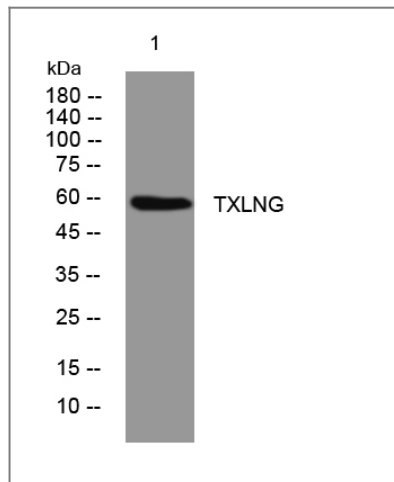
Tissue specificity

Ubiquitously expressed. Expressed at high level in heart and skeletal muscle. Expressed in brain, placenta, lung, liver, kidney and pancreas.

Function

Function:May be involved in intracellular vesicle traffic.,similarity:Belongs to the taxilin family.,subunit:Binds to the C-terminal coiled coil region of syntaxin family members STX1A, STX3A and STX4A.,tissue specificity:Ubiquitously expressed. Expressed at high level in heart and skeletal muscle. Expressed in brain, placenta, lung, liver, kidney and pancreas.,

Validation Data



Western blot analysis of lysates from PC-12 cells, primary antibody was diluted at 1:1000, 4°over night

Contact information

Orders: order@immunoway.com
Support: tech@immunoway.com
Telephone: 877-594-3616 (Toll Free), 408-747-0185
Website: <http://www.immunoway.com>
Address: 2200 Ringwood Ave San Jose, CA 95131 USA



Please scan the QR code
to access additional
product information:
TXLNG Rabbit pAb