

C42S2 Rabbit pAb

CatalogNo: YN3598

Key Features

Host Species

- Rabbit

Reactivity

- Human, Mouse, Rat

Applications

- IHC, IF

MW

- 9kD (Calculated)

Isotype

- IgG

Storage

Storage* -15°C to -25°C/1 year (Do not lower than -25°C)

Formulation Liquid in PBS containing 50% glycerol, 0.5% BSA and 0.02% sodium azide.

Recommended Dilution Ratios

IHC 1:50-200

IF 1:50-200

Basic Information

Clonality Polyclonal

Immunogen Information

Immunogen Synthesized peptide derived from human C42S2 AA range: 3-53

Specificity This antibody detects endogenous levels of C42S2 at Human/Mouse/Rat

Target Information

Gene name CDC42SE2 SPEC2

Protein Name C42S2

Organism	Gene ID	UniProt ID
Human	56990 ;	Q9NRR3 ;
Mouse	72729 ;	Q8BGH7 ;
Rat		A1L1K4 ;

Cellular Localization

Cytoplasm, cytoskeleton. Cell membrane; Lipid-anchor. Cell projection, phagocytic cup. Recruited to the activated TCR prior actin polymerization. Localizes at the phagocytic cup of macrophages.

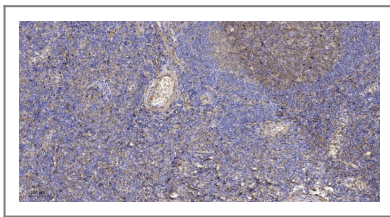
Tissue specificity

Widely expressed. Expressed at higher level in T-lymphocytes. Highly expressed in CCRF-CEM T-lymphocytes, Jurkat T-lymphocytes, and Raji B-lymphocytes compared (at protein level).

Function

Domain:The CRIB domain mediates interaction with CDC42.,Function:Probably involved in the organization of the actin cytoskeleton by acting downstream of CDC42, inducing actin filament assembly. Alters CDC42-induced cell shape changes. In activated T-cells, may play a role in CDC42-mediated F-actin accumulation at the immunological synapse. May play a role in early contractile events in phagocytosis in macrophages.,miscellaneous:CDC42SE2 is mapped in the genomic region associated with schizophrenia.,similarity:Belongs to the CDC42SE/SPEC family.,similarity:Contains 1 CRIB domain.,subcellular location:Recruited to the activated TCR prior actin polymerization. Localizes at the phagocytic cup of macrophages.,subunit:Interacts with CDC42 (in GTP-bound form). Interacts weakly with RAC1 and not at all with RHOA.,tissue specificity:Widely expressed. Expressed at higher level in T lymphocytes. Highly expressed in CCRF-CEM T lymphocytes, Jurkat T lymphocytes, and Raji B lymphocytes compared (at protein level).,

Validation Data



Immunohistochemical analysis of paraffin-embedded human tonsil. 1, Antibody was diluted at 1:200(4° overnight). 2, Tris-EDTA,pH9.0 was used for antigen retrieval. 3,Secondary antibody was diluted at 1:200(room temperature, 30min).

Contact information

Orders: order@immunoway.com
Support: tech@immunoway.com
Telephone: 877-594-3616 (Toll Free), 408-747-0185
Website: <http://www.immunoway.com>
Address: 2200 Ringwood Ave San Jose, CA 95131 USA



Please scan the QR code to access additional product information:
C42S2 Rabbit pAb

