

## U17L6 Rabbit pAb

CatalogNo: YN3587

### Key Features

#### Host Species

- Rabbit

#### Reactivity

- Human

#### Applications

- WB

#### MW

- 44kD (Calculated)

#### Isotype

- IgG

### Recommended Dilution Ratios

WB 1:500-2000

### Storage

#### Storage\*

-15°C to -25°C/1 year(Do not lower than -25°C)

#### Formulation

Liquid in PBS containing 50% glycerol, 0.5% BSA and 0.02% sodium azide.

### Basic Information

#### Clonality

Polyclonal

### Immunogen Information

#### Immunogen

Synthesized peptide derived from human U17L6 AA range: 207-257

#### Specificity

This antibody detects endogenous levels of U17L6 at Human

### Target Information

#### Gene name

USP17L6 USP17C USP17D USP17N

**Protein Name** U17L6

**Organism**

**Gene ID**

**UniProt ID**

Human

[Q6QN14](#);

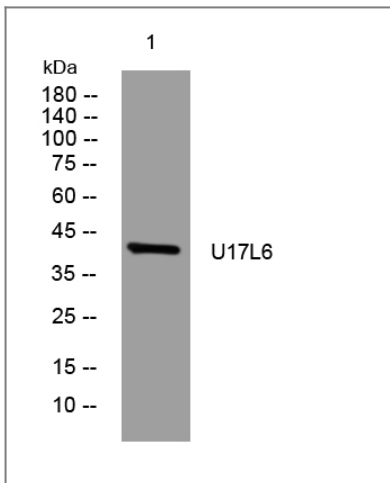
**Cellular  
Localization**

Nucleus . Cytoplasm .

**Function**

Catalytic activity:Ubiquitin C-terminal thioester + H(2)O = ubiquitin + a thiol.,Caution:The RS447 megasatellite DNA is a highly polymorphic conserved tandem repetitive sequence which contains a copy of USP17. It is present with an interindividual variation in copy number and between 20 to 103 copies can be found in the genome both on chromosome 4 and chromosome 8.,Function:Seems to be non-functional in the regulation of apoptosis. Cleaves ubiquitin fusion protein substrates.,similarity:Belongs to the peptidase C19 family. USP17 subfamily.,

## Validation Data



Western blot analysis of lysates from AD293 cells, primary antibody was diluted at 1:1000, 4° over night

## Contact information

Orders: [order@immunoway.com](mailto:order@immunoway.com)  
Support: [tech@immunoway.com](mailto:tech@immunoway.com)  
Telephone: 877-594-3616 (Toll Free), 408-747-0185  
Website: <http://www.immunoway.com>  
Address: 2200 Ringwood Ave San Jose, CA 95131 USA



Please scan the QR code to access additional product information:  
**U17L6 Rabbit pAb**