

MET22 Rabbit pAb

CatalogNo: YN3560

| Key Features

Host Species

- Rabbit

Reactivity

- Human, Mouse

Applications

- WB

MW

- 44kD (Calculated)

Isotype

- IgG

| Recommended Dilution Ratios

WB 1:500-2000

| Storage

Storage*

-15°C to -25°C/1 year (Do not lower than -25°C)

Formulation

Liquid in PBS containing 50% glycerol, 0.5% BSA and 0.02% sodium azide.

| Basic Information

Clonality

Polyclonal

| Immunogen Information

Immunogen

Synthesized peptide derived from human MET22 AA range: 60-110

Specificity

This antibody detects endogenous levels of MET22 at Human/Mouse

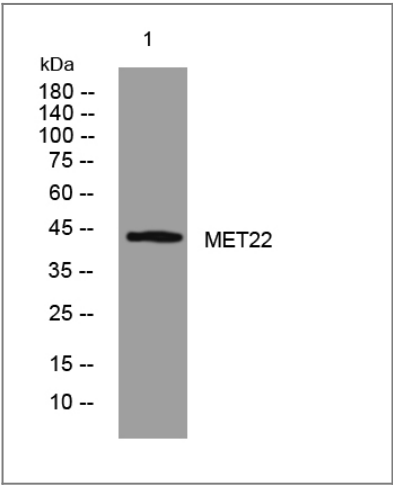
| Target Information

Gene name

METTL22 C16orf68 LP8272

Protein Name	MET22		
	Organism	Gene ID	UniProt ID
	Human	79091;	Q9BUU2;
	Mouse	239706;	Q8R1C6;
Cellular Localization	Nucleus .		

Validation Data



Western blot analysis of lysates from HCT116 cells, primary antibody was diluted at 1:1000, 4°over night

Contact information

Orders: order@immunoway.com
Support: tech@immunoway.com
Telephone: 877-594-3616 (Toll Free), 408-747-0185
Website: http://www.immunoway.com
Address: 2200 Ringwood Ave San Jose, CA 95131 USA



Please scan the QR code to access additional product information:
MET22 Rabbit pAb