

## NLGNX Rabbit pAb

CatalogNo: YN3554

### Key Features

#### Host Species

- Rabbit

#### Reactivity

- Human

#### Applications

- WB

#### MW

- 90kD (Calculated)

#### Isotype

- IgG

### Recommended Dilution Ratios

WB 1:500-2000

### Storage

#### Storage\*

-15°C to -25°C/1 year(Do not lower than -25°C)

#### Formulation

Liquid in PBS containing 50% glycerol, 0.5% BSA and 0.02% sodium azide.

### Basic Information

#### Clonality

Polyclonal

### Immunogen Information

#### Immunogen

Synthesized peptide derived from human NLGNX AA range: 601-651

#### Specificity

This antibody detects endogenous levels of NLGNX at Human

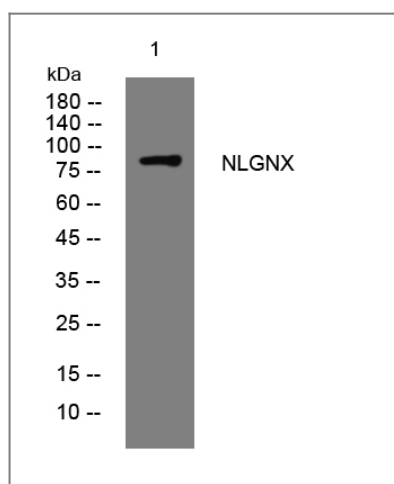
### Target Information

#### Gene name

NLGN4X KIAA1260 NLGN4 UNQ365/PRO701

<b>Protein Name</b>	NLGNX		
	<b>Organism</b>	<b>Gene ID</b>	<b>UniProt ID</b>
	Human	<a href="#">57502;</a>	<a href="#">Q8N0W4;</a>
<b>Cellular Localization</b>	Cell membrane; Single-pass type I membrane protein. Cell junction, synapse, postsynaptic density membrane.		
<b>Tissue specificity</b>	Expressed at highest levels in heart. Expressed at lower levels in liver, skeletal muscle and pancreas and at very low levels in brain.		
<b>Function</b>	Disease:Defects in NLGN4X may be the cause of susceptibility to X-linked Asperger syndrome 2 (ASPGX2) [MIM:300497]. ASPGX2 is considered to be a form of childhood autism.,Disease:Defects in NLGN4X may be the cause of susceptibility to X-linked autism 2 (AUTSX2) [MIM:300495]. AUTSX2 is a pervasive developmental disorder (PDD), prototypically characterized by impairments in reciprocal social interaction and communication, restricted and stereotyped patterns of interests and activities, and the presence of developmental abnormalities by 3 years of age.,Function:Putative neuronal cell surface protein involved in cell-cell-interactions.,similarity:Belongs to the type-B carboxylesterase/lipase family.,subunit:Interacts through its C-terminus with DLG4/PSD-95 third PDZ domain.,tissue specificity:Expressed at highest levels in heart. Expressed at lower levels in liver, skeletal muscle and pancreas and at very low levels in brain.,		

## Validation Data



Western blot analysis of lysates from K562 cells, primary antibody was diluted at 1:1000, 4° over night

## Contact information

Orders: [order@immunoway.com](mailto:order@immunoway.com)  
 Support: [tech@immunoway.com](mailto:tech@immunoway.com)  
 Telephone: 877-594-3616 (Toll Free), 408-747-0185  
 Website: <http://www.immunoway.com>  
 Address: 2200 Ringwood Ave San Jose, CA 95131 USA



Please scan the QR code to access additional product information:  
**NLGNX Rabbit pAb**

