

PBIP1 Rabbit pAb

CatalogNo: YN3553

Key Features

Host Species

- Rabbit

Reactivity

- Human, Mouse, Rat

Applications

- WB

MW

- 80kD (Calculated)

Isotype

- IgG

Recommended Dilution Ratios

WB 1:500-2000

Storage

Storage* -15°C to -25°C/1 year (Do not lower than -25°C)

Formulation Liquid in PBS containing 50% glycerol, 0.5% BSA and 0.02% sodium azide.

Basic Information

Clonality Polyclonal

Immunogen Information

Immunogen Synthesized peptide derived from human PBIP1 AA range: 585-635

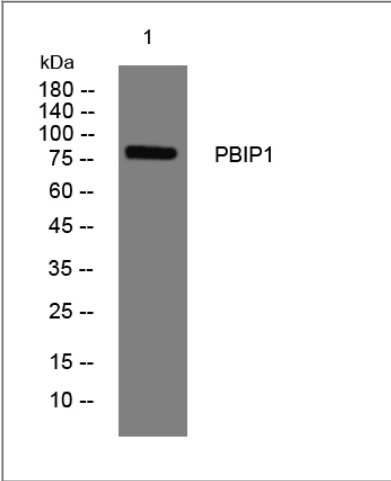
Specificity This antibody detects endogenous levels of PBIP1 at Human/Mouse/Rat

Target Information

Gene name PBXIP1 HPIP

| Protein Name | PBIP1 | | |
|-----------------------|--|-------------------------|-------------------------|
| | Organism | Gene ID | UniProt ID |
| | Human | 57326; | Q96AQ6; |
| | Mouse | 229534; | Q3TVI8; |
| | Rat | 310644; | A2VD12; |
| Cellular Localization | Cytoplasm, cytoskeleton . Nucleus . Shuttles between the nucleus and the cytosol (PubMed:12360403). Mainly localized in the cytoplasm, associated with microtubules (PubMed:10825160, PubMed:12360403). Detected in small amounts in the nucleus (PubMed:10825160). | | |
| Tissue specificity | Expressed in early hematopoietic precursors. | | |
| Function | Domain:Association to the cytoskeleton through a N-terminal leucine rich-domain (AA 190-218).,Domain:The C-terminal domain (AA 443-731) contains a nuclear export signal.,Function:Regulator of pre-B-cell leukemia transcription factors (BPXs) function. Inhibits the binding of PBX1-HOX complex to DNA and blocks the transcriptional activity of E2A-PBX1. Tethers estrogen receptor-alpha (ESR1) to microtubules and allows them to influence estrogen receptors-alpha signaling.,subcellular location:Shuttles between the nucleus and the cytosol. Mainly localized in the cytoplasm, associated with microtubules. Detected in small amounts in the nucleus.,subunit:Interacts with ESR1, PBX1, PBX2 and PBX3.,tissue specificity:Expressed in early hematopoietic precursors., | | |

Validation Data



Western blot analysis of lysates from SW480 cells, primary antibody was diluted at 1:1000, 4°over night

Contact information

Orders: order@immunoway.com
Support: tech@immunoway.com
Telephone: 877-594-3616 (Toll Free), 408-747-0185
Website: <http://www.immunoway.com>
Address: 2200 Ringwood Ave San Jose, CA 95131 USA



Please scan the QR code
to access additional
product information:
PBIP1 Rabbit pAb

For Research Use Only. Not for Use in Diagnostic Procedures.

[Antibody](#) | [ELISA Kits](#) | [Protein](#) | [Reagents](#)