

ST3L2 Rabbit pAb

CatalogNo: YN3548

| Key Features

Host Species

- Rabbit

Reactivity

- Human

Applications

- WB

MW

- 15kD (Calculated)

Isotype

- IgG

| Recommended Dilution Ratios

WB 1:500-2000

| Storage

Storage*

-15°C to -25°C/1 year(Do not lower than -25°C)

Formulation

Liquid in PBS containing 50% glycerol, 0.5% BSA and 0.02% sodium azide.

| Basic Information

Clonality

Polyclonal

| Immunogen Information

Immunogen

Synthesized peptide derived from human ST3L2 AA range: 25-75

Specificity

This antibody detects endogenous levels of ST3L2 at Human

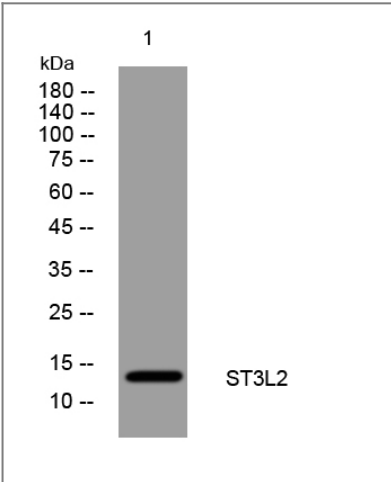
| Target Information

Gene name

STAG3L2

Protein Name	ST3L2		
	Organism	Gene ID	UniProt ID
	Human		P0CL84 ;
Cellular Localization	Nucleus .		
Function	similarity:Belongs to the SCC3 family.,similarity:Contains 1 SCD (stromalin conservative) domain.,		

| Validation Data



Western blot analysis of lysates from KB cells, primary antibody was diluted at 1:1000, 4°over night

| Contact information

Orders:

order@immunoway.com

Support:

tech@immunoway.com

Telephone:

877-594-3616 (Toll Free), 408-747-0185

Website:

http://www.immunoway.com

Address:

2200 Ringwood Ave San Jose, CA 95131 USA



Please scan the QR code to access additional product information:
ST3L2 Rabbit pAb