

## TM141 Rabbit pAb

CatalogNo: YN3547

### Key Features

#### Host Species

- Rabbit

#### Reactivity

- Human, Mouse

#### Applications

- IHC, IF

#### MW

- 12kD (Calculated)

#### Isotype

- IgG

### Recommended Dilution Ratios

IHC 1:50-200

IF 1:50-200

### Storage

**Storage\*** -15°C to -25°C/1 year (Do not lower than -25°C)

**Formulation** Liquid in PBS containing 50% glycerol, 0.5% BSA and 0.02% sodium azide.

### Basic Information

**Clonality** Polyclonal

### Immunogen Information

**Immunogen** Synthesized peptide derived from human TM141 AA range: 5-55

**Specificity** This antibody detects endogenous levels of TM141 at Human/Mouse

### Target Information

**Gene name** TMEM141

**Protein Name** TM141

**Organism**

**Gene ID**

**UniProt ID**

Human

[85014](#);

[Q96I45](#);

Mouse

[51875](#);

[A2AJB2](#);

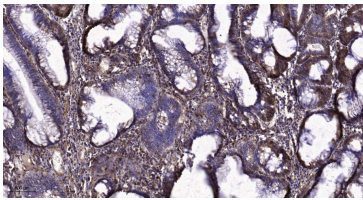
**Cellular  
Localization**

Membrane ; Multi-pass membrane protein .

**Function**

similarity:Belongs to the TMEM141 family.,

## | Validation Data



Immunohistochemical analysis of paraffin-embedded human colon cancer. 1, Tris-EDTA,pH9.0 was used for antigen retrieval. 2 Antibody was diluted at 1:200(4° overnight.3,Secondary antibody was diluted at 1:200(room temperature, 45min).

## | Contact information

Orders: order@immunoway.com  
Support: tech@immunoway.com  
Telephone: 877-594-3616 (Toll Free), 408-747-0185  
Website: <http://www.immunoway.com>  
Address: 2200 Ringwood Ave San Jose, CA 95131 USA



Please scan the QR code  
to access additional  
product information:  
**TM141 Rabbit pAb**

For Research Use Only. Not for Use in Diagnostic Procedures.

[Antibody](#) | [ELISA Kits](#) | [Protein](#) | [Reagents](#)