

LCE4A Rabbit pAb

CatalogNo: YN3543

Key Features

Host Species

- Rabbit

Reactivity

- Human

Applications

- IHC,IF

MW

- 11kD (Calculated)

Isotype

- IgG

Recommended Dilution Ratios

IHC 1:50-200

IF 1:50-200

Storage

Storage* -15°C to -25°C/1 year(Do not lower than -25°C)

Formulation Liquid in PBS containing 50% glycerol, 0.5% BSA and 0.02% sodium azide.

Basic Information

Clonality Polyclonal

Immunogen Information

Immunogen Synthesized peptide derived from human LCE4A AA range: 48-98

Specificity This antibody detects endogenous levels of LCE4A at Human

Target Information

Gene name LCE4A LEP8 SPRL4A

Protein Name LCE4A

Organism

Human

Gene ID

[199834](#);

UniProt ID

[Q5TA78](#);

**Cellular
Localization**

cornified envelope,cytoplasm,

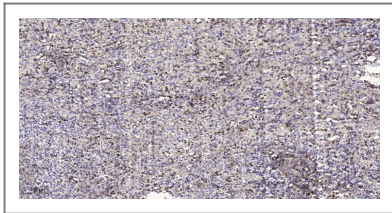
Tissue specificity

Skin-specific. Expression was readily detected in adult trunk skin, adult arm skin, fetal skin, penal skin, vulva, esophagus and tongue. Not expressed in the cervix, rectum, lung, colon, or placenta.

Function

Function:Precursors of the cornified envelope of the stratum corneum.,miscellaneous:Belongs to the LCE cluster present on 1q21.,similarity:Belongs to the LCE family.,tissue specificity:Skin-specific. Expression was readily detected in adult trunk skin, adult arm skin, fetal skin, penal skin, vulva, esophagus and tongue. Not expressed in the cervix, rectum, lung, colon, or placenta.,

| Validation Data



Immunohistochemical analysis of paraffin-embedded human spleen tissue. 1,primary Antibody was diluted at 1:200(4° overnight). 2, Sodium citrate pH 6.0 was used for antigen retrieval(>98°C,20min). 3,Secondary antibody was diluted at 1:200

| Contact information

Orders: order@immunoway.com
Support: tech@immunoway.com
Telephone: 877-594-3616 (Toll Free), 408-747-0185
Website: <http://www.immunoway.com>
Address: 2200 Ringwood Ave San Jose, CA 95131 USA



Please scan the QR code to access additional product information:
LCE4A Rabbit pAb

For Research Use Only. Not for Use in Diagnostic Procedures.

[Antibody](#) | [ELISA Kits](#) | [Protein](#) | [Reagents](#)