

CDRT1 Rabbit pAb

CatalogNo: YN3530

| Key Features

Host Species

- Rabbit

Reactivity

- Human

Applications

- WB

MW

- 83kD (Calculated)

Isotype

- IgG

| Recommended Dilution Ratios

WB 1:500-2000

| Storage

Storage* -15°C to -25°C/1 year(Do not lower than -25°C)

Formulation Liquid in PBS containing 50% glycerol, 0.5% BSA and 0.02% sodium azide.

| Basic Information

Clonality Polyclonal

| Immunogen Information

Immunogen Synthesized peptide derived from human CDRT1 AA range: 364-414

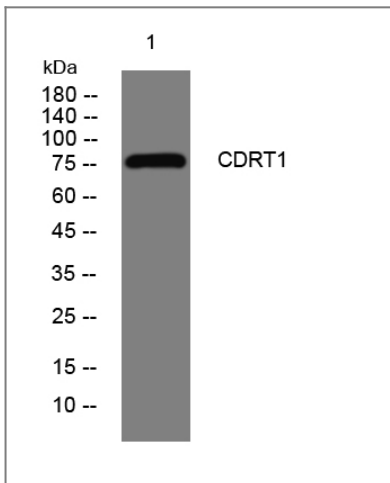
Specificity This antibody detects endogenous levels of CDRT1 at Human

| Target Information

Gene name CDRT1 C17orf1 C17orf1A HREP

Protein Name	CDRT1		
	Organism	Gene ID	UniProt ID
	Human	374286;	O95170;
Cellular Localization	intracellular,		
Tissue specificity	Expressed in pancreas, heart and skeletal muscle.		
Function	miscellaneous:CDRT1 gene is located centromeric to and partially within proximal CMT1A-REP element. CMT1A-REP is a complex binary repeat element flanking a 1.5-Mb DNA region duplicated in Charcot-Marie-Tooth disease type I (CMT1A) or deleted in Hereditary neuropathy (HNPP).,similarity:Contains 4 WD repeats.,tissue specificity:Expressed in pancreas, heart and skeletal muscle.,		

Validation Data



Western blot analysis of lysates from SH-SY5Y cells, primary antibody was diluted at 1:1000, 4° over night

Contact information

Orders: order@immunoway.com
 Support: tech@immunoway.com
 Telephone: 877-594-3616 (Toll Free), 408-747-0185
 Website: <http://www.immunoway.com>
 Address: 2200 Ringwood Ave San Jose, CA 95131 USA



Please scan the QR code to access additional product information:
CDRT1 Rabbit pAb