

SNAPN Rabbit pAb

CatalogNo: YN3524

Key Features

Host Species

- Rabbit

Reactivity

- Human, Mouse, Rat

Applications

- WB

MW

- 15kD (Calculated)

Isotype

- IgG

Storage

Storage* -15°C to -25°C/1 year (Do not lower than -25°C)

Formulation Liquid in PBS containing 50% glycerol, 0.5% BSA and 0.02% sodium azide.

Recommended Dilution Ratios

WB 1:500-2000

Basic Information

Clonality Polyclonal

Immunogen Information

Immunogen Synthesized peptide derived from human SNAPN AA range: 9-59

Specificity This antibody detects endogenous levels of SNAPN at Human/Mouse/Rat

Target Information

Gene name SNAPIN SNAP25BP SNAPAP

Protein Name SNAPN

Organism	Gene ID	UniProt ID
Human	23557 ;	O95295 ;
Mouse	20615 ;	Q9Z266 ;
Rat	295217 ;	P60192 ;

Cellular Localization

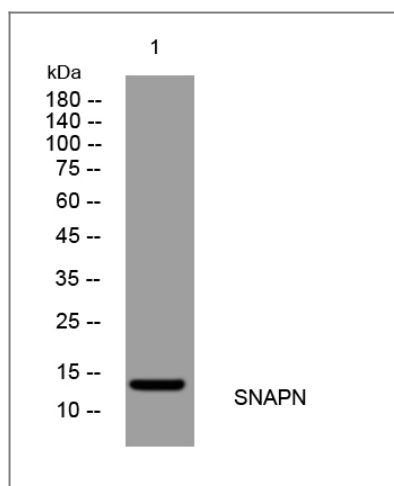
Membrane ; Peripheral membrane protein ; Cytoplasmic side . Cytoplasm, cytosol . Cytoplasm, perinuclear region . Golgi apparatus membrane . Lysosome membrane . Cytoplasmic vesicle, secretory vesicle, synaptic vesicle membrane . Colocalizes with NANOS1 and PUM2 in the perinuclear region of germ cells. .

Tissue specificity Expressed in male germ cells of adult testis (at protein level).

Function

Function:May modulate a step between vesicle priming, fusion and calcium-dependent neurotransmitter release by potentiating the interaction of synaptotagmins with the SNAREs and the plasma-membrane-associated protein SNAP25. Its phosphorylation state influences exocytotic protein interactions and may regulate synaptic vesicle exocytosis. May also have a role in the mechanisms of SNARE-mediated membrane fusion in non-neuronal cells.,PTM:Phosphorylated.,subcellular location:May be cytoplasmic and peripheral membrane bound or anchored to the vesicular membrane through an N-terminal signal anchor.,subunit:Associates with the SNARE complex. Interacts with SNAP23, SNAP25 and STX4A but not with STX1A, VAMP2 and SYT1. Phosphorylation increases its interaction with SNAP25 (By similarity). Interacts with RGS7. Component of the biogenesis of lysosome-related organelles (BLOC-1) complex which is required for normal biogenesis of specialized organelles of the endosomal-lysosomal system. Interacts with CEP110.,

Validation Data



Western blot analysis of lysates from HEK293 cells, primary antibody was diluted at 1:1000, 4°over night

Contact information

Orders: order@immunoway.com
Support: tech@immunoway.com
Telephone: 877-594-3616 (Toll Free), 408-747-0185
Website: http://www.immunoway.com
Address: 2200 Ringwood Ave San Jose, CA 95131 USA



Please scan the QR code
to access additional
product information:
SNAPN Rabbit pAb

For Research Use Only. Not for Use in Diagnostic Procedures.

[Antibody](#) | [ELISA Kits](#) | [Protein](#) | [Reagents](#)