

ADPRM Rabbit pAb

CatalogNo: YN3514

Key Features

Host Species

- Rabbit

Reactivity

- Human, Mouse, Rat

Applications

- WB

MW

- 38kD (Calculated)

Isotype

- IgG

Recommended Dilution Ratios

WB 1:500-2000

Storage

Storage* -15°C to -25°C/1 year (Do not lower than -25°C)

Formulation Liquid in PBS containing 50% glycerol, 0.5% BSA and 0.02% sodium azide.

Basic Information

Clonality Polyclonal

Immunogen Information

Immunogen Synthesized peptide derived from human ADPRM AA range: 225-275

Specificity This antibody detects endogenous levels of ADPRM at Human/Mouse/Rat

Target Information

Gene name ADPRM C17orf48 MDS006 Nbla03831

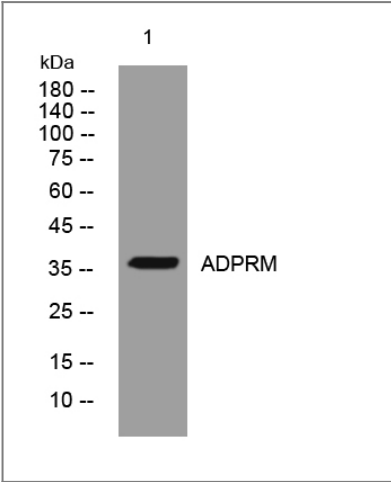
Protein Name ADPRM

Organism	Gene ID	UniProt ID
Human	56985 ;	Q3LIE5 ;
Mouse	66358 ;	Q99KS6 ;
Rat	287406 ;	Q5M886 ;

Cellular Localization cytosol,integral component of membrane,

Function Catalytic activity:ADP-ribose + H(2)O = AMP + D-ribose 5-phosphate.,Catalytic activity:CDP-choline + H(2)O = CMP + phosphocholine.,Catalytic activity:CDP-glycerol + H(2)O = CMP + sn-glycerol 3-phosphate.,cofactor:Magnesium.,Function:hydrolyzes ADP-ribose, IDP-ribose, CDP-glycerol, CDP-choline and CDP-ethanolamine, but not other non-reducing ADP-sugars or CDP-glucose. May be involved in immune cell signaling as suggested by the second-messenger role of ADP-ribose, which activates TRPM2 as a mediator of oxidative/nitrosative stress.,similarity:Belongs to the ADPRibase-Mn family.,subunit:Monomer.,

| Validation Data



Western blot analysis of lysates from U2OS cells, primary antibody was diluted at 1:1000, 4°over night

| Contact information

Orders: order@immunoway.com
Support: tech@immunoway.com
Telephone: 877-594-3616 (Toll Free), 408-747-0185
Website: http://www.immunoway.com
Address: 2200 Ringwood Ave San Jose, CA 95131 USA



Please scan the QR code to access additional product information:
ADPRM Rabbit pAb

