

MAT2B Rabbit pAb

CatalogNo: YN3501

| Key Features

Host Species

- Rabbit

Reactivity

- Human, Mouse, Rat

Applications

- WB

MW

- 37kD (Calculated)

Isotype

- IgG

| Recommended Dilution Ratios

WB 1:500-2000

| Storage

Storage* -15°C to -25°C/1 year (Do not lower than -25°C)

Formulation Liquid in PBS containing 50% glycerol, 0.5% BSA and 0.02% sodium azide.

| Basic Information

Clonality Polyclonal

| Immunogen Information

Immunogen Synthesized peptide derived from human MAT2B AA range: 23-73

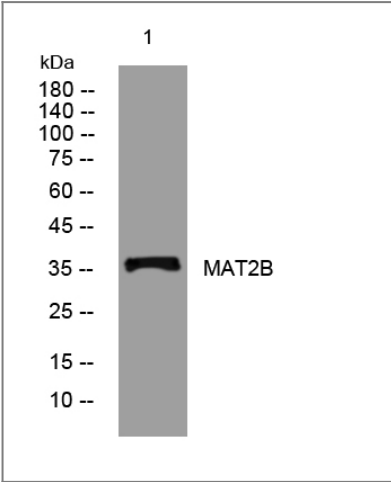
Specificity This antibody detects endogenous levels of MAT2B at Human/Mouse/Rat

| Target Information

Gene name MAT2B TGR MSTP045 Nbla02999 UNQ2435/PRO4995

Protein Name	MAT2B		
	Organism	Gene ID	UniProt ID
	Human	27430;	Q9NZL9;
	Mouse	108645;	Q99LB6;
	Rat	683630;	Q5U2R0;
Cellular Localization	intracellular,nucleus,mitochondrion,cytosol,methionine adenosyltransferase complex,extracellular exosome,		
Tissue specificity	Widely expressed.		
Function	Function:Non-catalytic regulatory subunit of S-adenosylmethionine synthetase 2 (MAT2A), an enzyme that catalyzes the formation of S-adenosylmethionine from methionine and ATP. Regulates the activity of S-adenosylmethionine synthetase 2 by changing its kinetic properties, rendering the enzyme more susceptible to S-adenosylmethionine inhibition.,miscellaneous:Its expression in hepatoma cell lines may lead to increase DNA synthesis and thereby participate to cell proliferation.,pathway:Amino-acid biosynthesis; S-adenosyl-L-methionine biosynthesis; S-adenosyl-L-methionine from L-methionine: step 1/1.,similarity:Belongs to the dTDP-4-dehydrorhamnose reductase family. MAT2B subfamily.,subunit:Heterotetramer composed of 2 catalytic alpha subunits (alpha and alpha') (MAT2A) and 1 copy of beta subunit (MAT2B).,tissue specificity:Widely expressed.,		

Validation Data



Western blot analysis of lysates from DU145 cells, primary antibody was diluted at 1:1000, 4°over night

Contact information

Orders: order@immunoway.com
Support: tech@immunoway.com
Telephone: 877-594-3616 (Toll Free), 408-747-0185
Website: <http://www.immunoway.com>
Address: 2200 Ringwood Ave San Jose, CA 95131 USA



Please scan the QR code
to access additional
product information:
MAT2B Rabbit pAb

For Research Use Only. Not for Use in Diagnostic Procedures.

[Antibody](#) | [ELISA Kits](#) | [Protein](#) | [Reagents](#)