

TRI41 Rabbit pAb

CatalogNo: YN3486

Key Features

Host Species

- Rabbit

Reactivity

- Human, Mouse

Applications

- WB

MW

- 69kD (Calculated)

Isotype

- IgG

Storage

Storage* -15°C to -25°C/1 year (Do not lower than -25°C)

Formulation Liquid in PBS containing 50% glycerol, 0.5% BSA and 0.02% sodium azide.

Recommended Dilution Ratios

WB 1:500-2000

Basic Information

Clonality Polyclonal

Immunogen Information

Immunogen Synthesized peptide derived from human TRI41 AA range: 464-514

Specificity This antibody detects endogenous levels of TRI41 at Human/Mouse

Target Information

Gene name TRIM41 RINCK

Protein Name TRI41

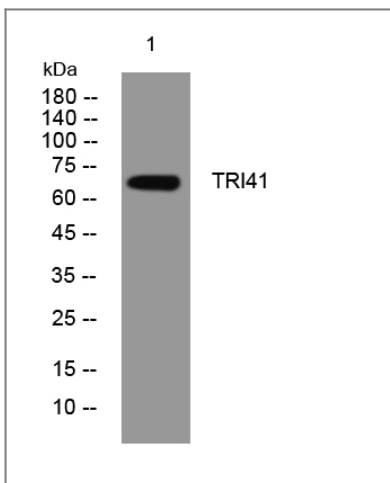
Organism	Gene ID	UniProt ID
Human	90933 ;	Q8WV44 ;
Mouse	211007 ;	Q5NCC3 ;

Cellular Localization Cytoplasm . Nucleus .

Tissue specificity Expressed in multiple tissues with the highest levels in heart and skeletal muscle.

Function similarity:Belongs to the TRIM/RBCC family.,similarity:Contains 1 B box-type zinc finger.,similarity:Contains 1 B30.2/SPRY domain.,similarity:Contains 1 RING-type zinc finger.,

Validation Data



Western blot analysis of lysates from MCF-7 cells, primary antibody was diluted at 1:1000, 4°over night

Contact information

Orders: order@immunoway.com
Support: tech@immunoway.com
Telephone: 877-594-3616 (Toll Free), 408-747-0185
Website: <http://www.immunoway.com>
Address: 2200 Ringwood Ave San Jose, CA 95131 USA



Please scan the QR code to access additional product information:
TRI41 Rabbit pAb