

## T132D Rabbit pAb

CatalogNo: YN3482

### | Key Features

#### Host Species

- Rabbit

#### Reactivity

- Human, Mouse, Rat

#### Applications

- WB

#### MW

- 121kD (Calculated)

#### Isotype

- IgG

### | Recommended Dilution Ratios

WB 1:500-2000

### | Storage

#### Storage\*

-15°C to -25°C/1 year (Do not lower than -25°C)

#### Formulation

Liquid in PBS containing 50% glycerol, 0.5% BSA and 0.02% sodium azide.

### | Basic Information

#### Clonality

Polyclonal

### | Immunogen Information

#### Immunogen

Synthesized peptide derived from human T132D AA range: 509-559

#### Specificity

This antibody detects endogenous levels of T132D at Human/Mouse/Rat

### | Target Information

#### Gene name

TMEM132D HBE120 KIAA1944 MOLT

**Protein Name** T132D

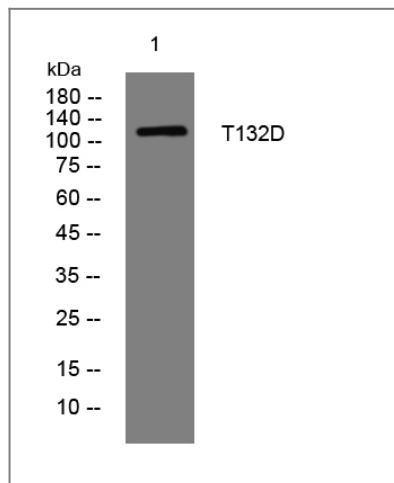
Organism	Gene ID	UniProt ID
Human	<a href="#">121256</a> ;	<a href="#">Q14C87</a> ;
Mouse	<a href="#">243274</a> ;	<a href="#">Q76HP3</a> ;
Rat	<a href="#">288750</a> ;	<a href="#">Q76HP2</a> ;

**Cellular Localization** Membrane ; Single-pass type I membrane protein .

**Tissue specificity** Expressed in mature oligodendrocytes. Detected in the brain, lung, pancreas and testis.

**Function** Function:May serve as a cell-surface marker for oligodendrocyte differentiation.,similarity:Belongs to the TMEM132 family.,tissue specificity:Expressed in mature oligodendrocytes. Detected in the brain, lung, pancreas and testis.,

## Validation Data



Western blot analysis of lysates from AD293 cells, primary antibody was diluted at 1:1000, 4°over night

## Contact information

Orders: order@immunoway.com  
Support: tech@immunoway.com  
Telephone: 877-594-3616 (Toll Free), 408-747-0185  
Website: <http://www.immunoway.com>  
Address: 2200 Ringwood Ave San Jose, CA 95131 USA



Please scan the QR code to access additional product information:  
**T132D Rabbit pAb**