

IF122 Rabbit pAb

CatalogNo: YN3458

Key Features

Host Species

- Rabbit

Reactivity

- Human, Mouse

Applications

- WB

MW

- 137kD (Calculated)

Isotype

- IgG

Recommended Dilution Ratios

WB 1:500-2000

Storage

Storage*

-15°C to -25°C/1 year (Do not lower than -25°C)

Formulation

Liquid in PBS containing 50% glycerol, 0.5% BSA and 0.02% sodium azide.

Basic Information

Clonality

Polyclonal

Immunogen Information

Immunogen

Synthesized peptide derived from human IF122 AA range: 956-1006

Specificity

This antibody detects endogenous levels of IF122 at Human/Mouse

Target Information

Gene name

IFT122 SPG WDR10 WDR140

Protein Name IF122

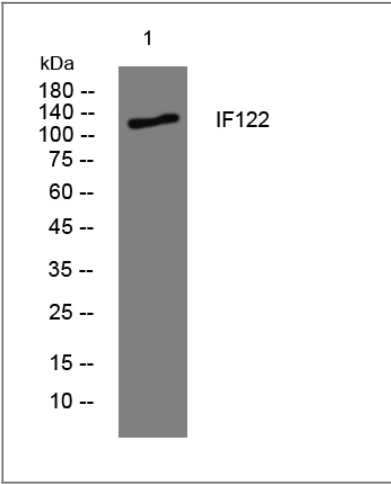
Organism	Gene ID	UniProt ID
Human	55764 ;	Q9HBG6 ;
Mouse	81896 ;	Q6NWW3 ;

Cellular Localization Cell projection, cilium . Cytoplasm, cytoskeleton, cilium basal body . Localizes to photoreceptor connecting cilia. .

Tissue specificity Expressed in many tissues. Predominant expression in testis and pituitary.

Function similarity:Contains 7 WD repeats.,tissue specificity:Expressed in many tissues. Predominant expression in testis and pituitary.,

Validation Data



Western blot analysis of lysates from MCF-7 cells, primary antibody was diluted at 1:1000, 4°over night

Contact information

Orders: order@immunoway.com
Support: tech@immunoway.com
Telephone: 877-594-3616 (Toll Free), 408-747-0185
Website: <http://www.immunoway.com>
Address: 2200 Ringwood Ave San Jose, CA 95131 USA



Please scan the QR code to access additional product information:
IF122 Rabbit pAb