

EPPI Rabbit pAb

CatalogNo: YN3457

| Key Features

Host Species

- Rabbit

Reactivity

- Human, Mouse, Rat

Applications

- WB

MW

- 15kD (Calculated)

Isotype

- IgG

| Recommended Dilution Ratios

WB 1:500-2000

| Storage

Storage* -15°C to -25°C/1 year (Do not lower than -25°C)

Formulation Liquid in PBS containing 50% glycerol, 0.5% BSA and 0.02% sodium azide.

| Basic Information

Clonality Polyclonal

| Immunogen Information

Immunogen Synthesized peptide derived from human EPPI AA range: 55-105

Specificity This antibody detects endogenous levels of EPPI at Human/Mouse/Rat

| Target Information

Gene name EPPIN SPINLW1 WAP7 WFDC7

Protein Name

EPPI

Organism	Gene ID	UniProt ID
Human	100526773 ;	O95925 ;
Mouse	75526 ;	Q9DA01 ;
Rat	685161 ;	D4A2Z2 ;

Cellular Localization

[Isoform 1]: Secreted. Cell surface. Bound to the surface of testicular and on the head and tail of ejaculate spermatozoa.

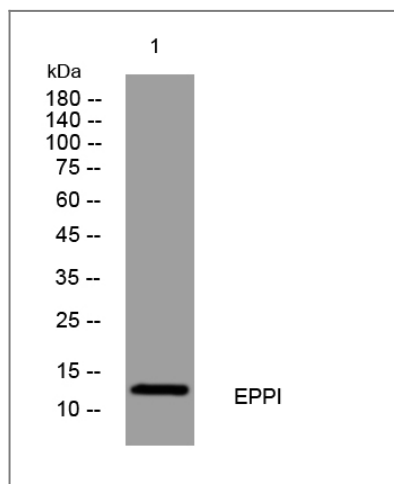
Tissue specificity

In testis, expressed and secreted by Sertoli cells, appearing on the surface of testicular and ejaculate spermatozoa. Expressed in the spermatogonia and the earliest preleptotene spermatocytes. In the epididymis, is expressed and secreted by epithelial cells and covers the surface of epididymal spermatozoa and ciliated epithelial cells (at protein level). Expressed specifically in epididymis and testis. Isoform 2 is expressed only in the epididymis. Weak expression is detected in myoid cells as well as spermatogenic cells.

Function

similarity:Contains 1 BPTI/Kunitz inhibitor domain.,similarity:Contains 1 WAP domain.,tissue specificity:Expressed in epididymis and testis.,tissue specificity:Ubiquitously expressed, but the highest levels are found in epididymis, testis and trachea.,

Validation Data



Western blot analysis of lysates from MDA-MB cells, primary antibody was diluted at 1:1000, 4° over night

Contact information

Orders: order@immunoway.com
Support: tech@immunoway.com
Telephone: 877-594-3616 (Toll Free), 408-747-0185
Website: <http://www.immunoway.com>
Address: 2200 Ringwood Ave San Jose, CA 95131 USA



Please scan the QR code to access additional product information:
EPPI Rabbit pAb

