

WASH1 Rabbit pAb

CatalogNo: YN3456

Key Features

Host Species

- Rabbit

Reactivity

- Human, Mouse, Rat

Applications

- WB

MW

- 51kD (Calculated)

Isotype

- IgG

Recommended Dilution Ratios

WB 1:500-2000

Storage

Storage* -15°C to -25°C/1 year (Do not lower than -25°C)

Formulation Liquid in PBS containing 50% glycerol, 0.5% BSA and 0.02% sodium azide.

Basic Information

Clonality Polyclonal

Immunogen Information

Immunogen Synthesized peptide derived from human WASH1 AA range: 163-213

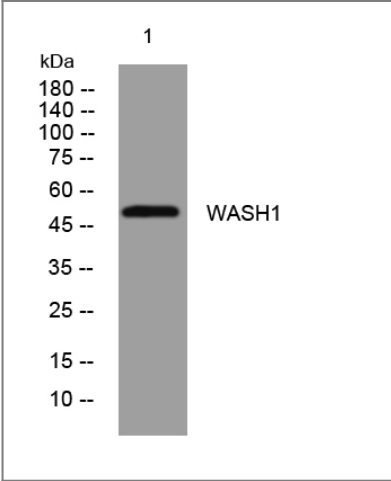
Specificity This antibody detects endogenous levels of WASH1 at Human/Mouse/Rat

Target Information

Gene name WASH1 FAM39E

Protein Name	WASH1		
	Organism	Gene ID	UniProt ID
	Human	100287171;	A8K0Z3;
	Mouse	68767;	Q8VDD8;
	Rat	367328;	B2RYF7;
Cellular Localization	Early endosome membrane . Recycling endosome membrane . Late endosome . Cytoplasmic vesicle, autophagosome . Cytoplasm, cytoskeleton, microtubule organizing center, centrosome, centriole . Localization to the endosome membrane is mediated via its interaction with WASHC2 (PubMed:19922874). Localizes to MMP14-positive late endosomes and transiently to invadopodia (PubMed:24344185). Localized to Salmonella typhimurium entry sites (By similarity). .		
Function	miscellaneous:The telomeric region of chromosome 9p is paralogous to the pericentromeric regions of chromosome 9 as well as to 2q. Paralogous regions contain 7 transcriptional units, including CXYorf1. Duplicated CXYorf1 genes are also present in the Xq/Yq pseudoautosomal region, as well as on chromosome 1 and 15. The chromosome 16 copy seems to be a pseudogene.,similarity:Belongs to the FAM39 family.,similarity:Contains 1 WH2 domain.,		

Validation Data



Western blot analysis of lysates from U2OS cells, primary antibody was diluted at 1:1000, 4°over night

Contact information

Orders: order@immunoway.com
Support: tech@immunoway.com
Telephone: 877-594-3616 (Toll Free), 408-747-0185
Website: http://www.immunoway.com
Address: 2200 Ringwood Ave San Jose, CA 95131 USA



Please scan the QR code to access additional product information:
WASH1 Rabbit pAb

