

## K1456 Rabbit pAb

CatalogNo: YN3441

### | Key Features

#### Host Species

- Rabbit

#### Reactivity

- Human, Mouse

#### Applications

- WB

#### MW

- 50kD (Calculated)

#### Isotype

- IgG

### | Recommended Dilution Ratios

WB 1:500-2000

### | Storage

**Storage\*** -15°C to -25°C/1 year (Do not lower than -25°C)

**Formulation** Liquid in PBS containing 50% glycerol, 0.5% BSA and 0.02% sodium azide.

### | Basic Information

**Clonality** Polyclonal

### | Immunogen Information

**Immunogen** Synthesized peptide derived from human K1456 AA range: 140-190

**Specificity** This antibody detects endogenous levels of K1456 at Human/Mouse

### | Target Information

**Gene name** KIAA1456 C8orf79

**Protein Name** K1456

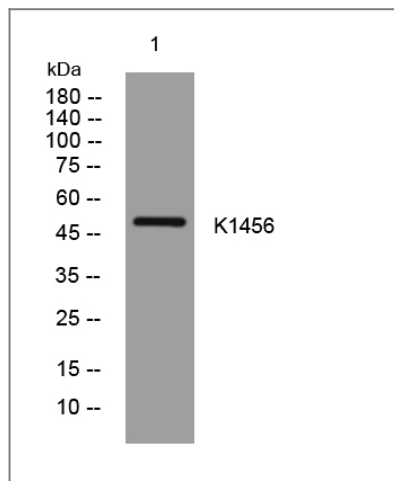
Organism	Gene ID	UniProt ID
Human	<a href="#">57604;</a>	<a href="#">Q9P272;</a>
Mouse	<a href="#">319582;</a>	<a href="#">Q80WQ4;</a>

**Cellular Localization** nucleus,cytoplasm,

**Tissue specificity** Down-regulated in breast, bladder, colorectal, cervix and testicular carcinomas.

**Function** similarity:Belongs to the methyltransferase superfamily.,

## Validation Data



Western blot analysis of lysates from MCF-7 cells, primary antibody was diluted at 1:1000, 4°over night

## Contact information

Orders: order@immunoway.com  
Support: tech@immunoway.com  
Telephone: 877-594-3616 (Toll Free), 408-747-0185  
Website: <http://www.immunoway.com>  
Address: 2200 Ringwood Ave San Jose, CA 95131 USA



Please scan the QR code to access additional product information:  
**K1456 Rabbit pAb**