

## CX068 Rabbit pAb

CatalogNo: YN3425

### | Key Features

#### Host Species

- Rabbit

#### Reactivity

- Human, Mouse

#### Applications

- IHC, IF

#### MW

- 11kD (Calculated)

#### Isotype

- IgG

### | Recommended Dilution Ratios

IHC 1:50-200

IF 1:50-200

### | Storage

**Storage\*** -15°C to -25°C/1 year (Do not lower than -25°C)

**Formulation** Liquid in PBS containing 50% glycerol, 0.5% BSA and 0.02% sodium azide.

### | Basic Information

**Clonality** Polyclonal

### | Immunogen Information

**Immunogen** Synthesized peptide derived from human CX068 AA range: 24-74

**Specificity** This antibody detects endogenous levels of CX068 at Human/Mouse

### | Target Information

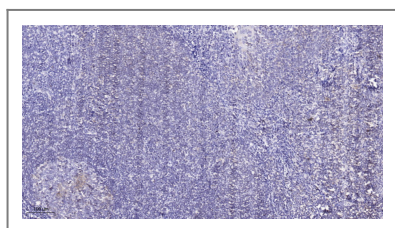
**Gene name** CXorf68

**Protein Name** CX068

Organism	Gene ID	UniProt ID
Human	<a href="#">100132963</a> ;	<a href="#">A6NGZ8</a> ;
Mouse	<a href="#">434800</a> ;	<a href="#">Q3V0X1</a> ;

**Cellular Localization** Cell membrane ; Single-pass type I membrane protein .

## | Validation Data



Immunohistochemical analysis of paraffin-embedded human tonsil. 1, Tris-EDTA, pH 9.0 was used for antigen retrieval. 2 Antibody was diluted at 1:200 (4° overnight). 3, Secondary antibody was diluted at 1:200 (room temperature, 45 min).

## | Contact information

Orders: [order@immunoway.com](mailto:order@immunoway.com)  
Support: [tech@immunoway.com](mailto:tech@immunoway.com)  
Telephone: 877-594-3616 (Toll Free), 408-747-0185  
Website: <http://www.immunoway.com>  
Address: 2200 Ringwood Ave San Jose, CA 95131 USA



Please scan the QR code to access additional product information:  
**CX068 Rabbit pAb**

For Research Use Only. Not for Use in Diagnostic Procedures.

[Antibody](#) | [ELISA Kits](#) | [Protein](#) | [Reagents](#)