

TRI50 Rabbit pAb

CatalogNo: YN3411

| Key Features

Host Species

- Rabbit

Reactivity

- Human, Mouse, Rat

Applications

- WB

MW

- 54kD (Calculated)

Isotype

- IgG

| Recommended Dilution Ratios

WB 1:500-2000

| Storage

Storage* -15°C to -25°C/1 year (Do not lower than -25°C)

Formulation Liquid in PBS containing 50% glycerol, 0.5% BSA and 0.02% sodium azide.

| Basic Information

Clonality Polyclonal

| Immunogen Information

Immunogen Synthesized peptide derived from human TRI50 AA range: 312-362

Specificity This antibody detects endogenous levels of TRI50 at Human/Mouse/Rat

| Target Information

Gene name TRIM50 TRIM50A

Protein Name TRI50

Organism	Gene ID	UniProt ID
Human	135892 ;	Q86XT4 ;
Mouse	215061 ;	Q810I2 ;
Rat	288596 ;	Q810I1 ;

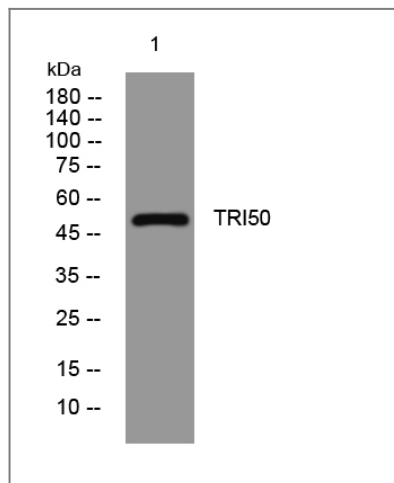
Cellular Localization

Cytoplasm . Localizes mainly into discrete cytoplasmic punctuate structures heterogeneous in size and shape containing polyubiquitinated proteins. .

Function

Function:E3 ubiquitin-protein ligase.,PTM:Auto-ubiquitinated.,similarity:Belongs to the TRIM/RBCC family.,similarity:Contains 1 B box-type zinc finger.,similarity:Contains 1 B30.2/SPRY domain.,similarity:Contains 1 RING-type zinc finger.,subunit:Can form dimers and trimers. Interacts with several E2 ubiquitin-conjugating enzymes, including UBE2L6, UBE2E1, UBE2E3. No interaction with UBE2H.,

Validation Data



Western blot analysis of lysates from 293T cells, primary antibody was diluted at 1:1000, 4° over night

Contact information

Orders: order@immunoway.com
Support: tech@immunoway.com
Telephone: 877-594-3616 (Toll Free), 408-747-0185
Website: <http://www.immunoway.com>
Address: 2200 Ringwood Ave San Jose, CA 95131 USA



Please scan the QR code to access additional product information:
TRI50 Rabbit pAb