

EFCB7 Rabbit pAb

CatalogNo: YN3410

| Key Features

Host Species

- Rabbit

Reactivity

- Human, Mouse

Applications

- WB

MW

- 69kD (Calculated)

Isotype

- IgG

| Recommended Dilution Ratios

WB 1:500-2000

| Storage

Storage*

-15°C to -25°C/1 year (Do not lower than -25°C)

Formulation

Liquid in PBS containing 50% glycerol, 0.5% BSA and 0.02% sodium azide.

| Basic Information

Clonality

Polyclonal

| Immunogen Information

Immunogen

Synthesized peptide derived from human EFCB7 AA range: 386-436

Specificity

This antibody detects endogenous levels of EFCB7 at Human/Mouse

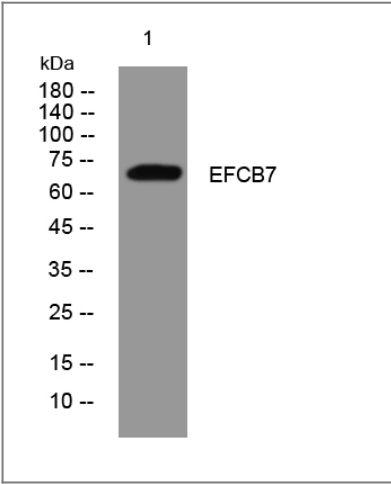
| Target Information

Gene name

EFCAB7 KIAA1799

| | | | |
|------------------------------|---|-------------------------|-------------------------|
| Protein Name | EFCB7 | | |
| | Organism | Gene ID | UniProt ID |
| | Human | 84455; | A8K855; |
| | Mouse | 230500; | Q8VDY4; |
| Cellular Localization | Cell projection, cilium membrane ; Peripheral membrane protein ; Cytoplasmic side . The EvC complex localizes at the base of cilia in the EvC zone of primary cilia in a EFCAB7-dependent manner. . | | |
| Function | similarity:Contains 3 EF-hand domains., | | |

Validation Data



Western blot analysis of lysates from K562 cells, primary antibody was diluted at 1:1000, 4°over night

Contact information

Orders: order@immunoway.com
 Support: tech@immunoway.com
 Telephone: 877-594-3616 (Toll Free), 408-747-0185
 Website: <http://www.immunoway.com>
 Address: 2200 Ringwood Ave San Jose, CA 95131 USA



Please scan the QR code
 to access additional
 product information:
EFCB7 Rabbit pAb