

PACE1 Rabbit pAb

CatalogNo: YN3405

| Key Features

Host Species

- Rabbit

Reactivity

- Human, Mouse

Applications

- WB

MW

- 82kD (Calculated)

Isotype

- IgG

| Recommended Dilution Ratios

WB 1:500-2000

| Storage

Storage*

-15°C to -25°C/1 year (Do not lower than -25°C)

Formulation

Liquid in PBS containing 50% glycerol, 0.5% BSA and 0.02% sodium azide.

| Basic Information

Clonality

Polyclonal

| Immunogen Information

Immunogen

Synthesized peptide derived from human PACE1 AA range: 519-569

Specificity

This antibody detects endogenous levels of PACE1 at Human/Mouse

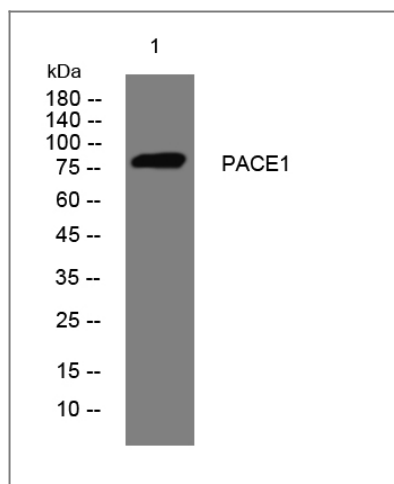
| Target Information

Gene name

SCYL3 PACE1

Protein Name	PACE1		
	Organism	Gene ID	UniProt ID
	Human	57147;	Q8IZE3;
	Mouse	240880;	Q9DBQ7;
Cellular Localization	Cytoplasm . Golgi apparatus . Cell projection, lamellipodium . Colocalized with EZR/VIL2, actin and CD44 in lamellipodia.		
Tissue specificity	Ubiquitously expressed.		
Function	Domain:The protein kinase domain is predicted to be catalytically inactive.,Function:May play a role in regulating cell adhesion/migration complexes in migrating cells.,PTM:May be myristoylated; myristoylation may target it to Golgi compartment.,PTM:Phosphorylated.,similarity:Belongs to the protein kinase superfamily.,similarity:Contains 1 protein kinase domain.,similarity:Contains 4 HEAT repeats.,subcellular location:Colocalized with EZR/VIL2, actin and CD44 in lamellipodia.,subunit:Interacts with EZR/VIL2 C-terminal domain.,tissue specificity:Ubiquitously expressed.,		

Validation Data



Western blot analysis of lysates from SW480 cells, primary antibody was diluted at 1:1000, 4° over night

Contact information

Orders: order@immunoway.com
 Support: tech@immunoway.com
 Telephone: 877-594-3616 (Toll Free), 408-747-0185
 Website: <http://www.immunoway.com>
 Address: 2200 Ringwood Ave San Jose, CA 95131 USA



Please scan the QR code to access additional product information:
PACE1 Rabbit pAb

