

## REXON Rabbit pAb

CatalogNo: YN3399

### Key Features

#### Host Species

- Rabbit

#### Reactivity

- Human,Rat

#### Applications

- WB

#### MW

- 85kD (Observed)

#### Isotype

- IgG

### Storage

**Storage\*** -15°C to -25°C/1 year(Do not lower than -25°C)

**Formulation** Liquid in PBS containing 50% glycerol, 0.5% BSA and 0.02% sodium azide.

### Recommended Dilution Ratios

WB 1:500-2000

### Basic Information

**Clonality** Polyclonal

### Immunogen Information

**Immunogen** Synthesized peptide derived from human REXON AA range: 582-632

**Specificity** This antibody detects endogenous levels of REXON at Human/Rat

### Target Information

**Gene name** 44M2.3

**Protein Name** REXON

**Organism**

**Gene ID**

**UniProt ID**

Human

[81691](#);

[Q96IC2](#);

Rat

[309036](#);

[A1A5R7](#);

**Cellular Localization**

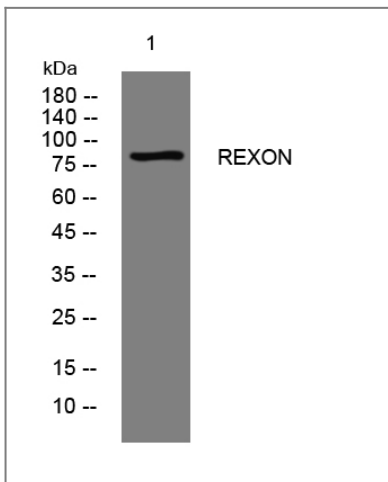
nucleolus,extracellular exosome,

**Tissue specificity** Lung,Testis,

**Function**

similarity:Contains 1 exonuclease domain.,similarity:Contains 2 RRM (RNA recognition motif) domains.,

## Validation Data



Western blot analysis of lysates from HpeG2 cells, primary antibody was diluted at 1:1000, 4°over night

## Contact information

Orders: [order@immunoway.com](mailto:order@immunoway.com)  
Support: [tech@immunoway.com](mailto:tech@immunoway.com)  
Telephone: 877-594-3616 (Toll Free), 408-747-0185  
Website: <http://www.immunoway.com>  
Address: 2200 Ringwood Ave San Jose, CA 95131 USA



Please scan the QR code to access additional product information:  
**REXON Rabbit pAb**