

DACT2 Rabbit pAb

CatalogNo: YN3397

Key Features

Host Species

- Rabbit

Reactivity

- Human, Mouse

Applications

- WB

MW

- 85kD (Observed)

Isotype

- IgG

Recommended Dilution Ratios

WB 1:500-2000

Storage

Storage*

-15°C to -25°C/1 year (Do not lower than -25°C)

Formulation

Liquid in PBS containing 50% glycerol, 0.5% BSA and 0.02% sodium azide.

Basic Information

Clonality

Polyclonal

Immunogen Information

Immunogen

Synthesized peptide derived from human DACT2 AA range: 239-289

Specificity

This antibody detects endogenous levels of DACT2 at Human/Mouse

Target Information

Gene name

DACT2 C6orf116 PP13671

Protein Name DACT2

Organism

Gene ID

UniProt ID

Human

[168002;](#)

[Q5SW24;](#)

Mouse

[240025;](#)

[Q7TN08;](#)

**Cellular
Localization**

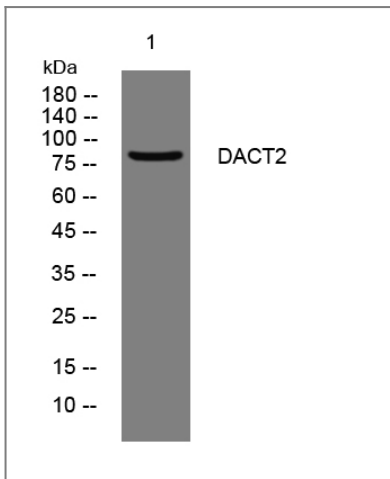
cytoplasm,mitochondrion,

Tissue specificity Placenta,

Function

Domain:The C-terminal PDZ-binding motif may mediate interaction with the PDZ domains of DSH (Dishevelled) family proteins.,Function:Negatively regulates the Nodal signaling pathway, possibly by promoting the lysosomal degradation of Nodal receptors.,similarity:Belongs to the dapper family.,

Validation Data



Western blot analysis of lysates from HCT116 cells, primary antibody was diluted at 1:1000, 4°over night

Contact information

Orders: order@immunoway.com
Support: tech@immunoway.com
Telephone: 877-594-3616 (Toll Free), 408-747-0185
Website: <http://www.immunoway.com>
Address: 2200 Ringwood Ave San Jose, CA 95131 USA



Please scan the QR code to access additional product information:
DACT2 Rabbit pAb